



# JAY R. SMITH CO.

PLUMBING & DRAINAGE PRODUCTS

959 Alness Street, North York, Ontario M3J 2J1

TEL: (416) 736-9610 FAX: (416) 736-3789

LOCATION

## PLANTING AREA DRAIN

### FOR LARGE AREAS

**FUNCTION:** The perforated standpipe, when surrounded by gravel fill, provides drainage of excess water from the planting or flower box. Top of standpipe is set at ground level and protected by dome cap. Excess surface water overflows into top of standpipe.

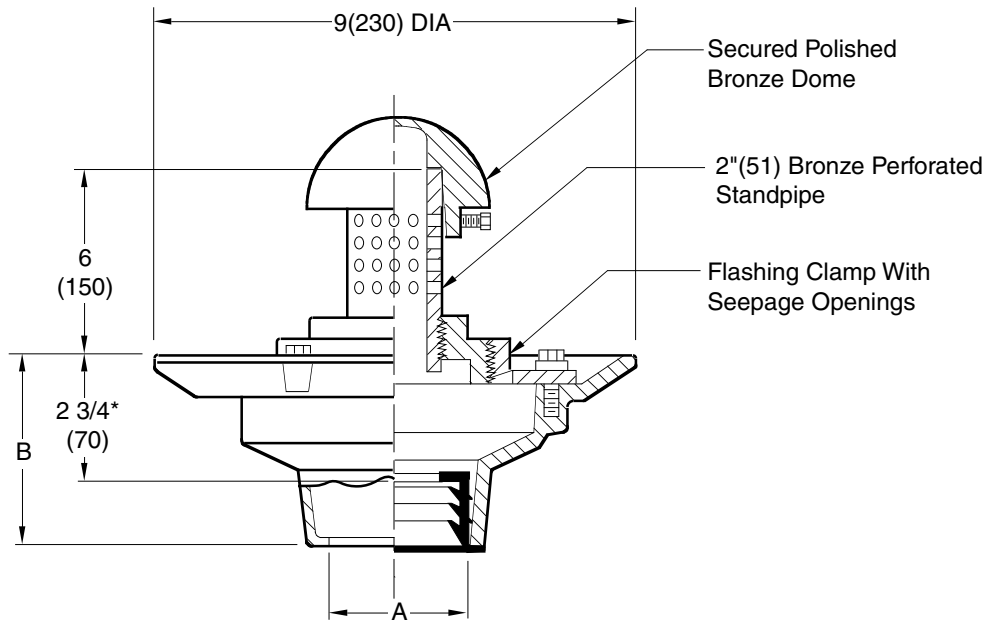


Fig. 2680C ... CAULK OUTLET  
Fig. 2680Y ... NO-HUB OUTLET

\*This dimension to Internal Stop of Speedi-Set Gasket.

NOTE: Clamp can be reversed.

A SIZE	02(50)	03(80)	04(100)
B	4(100) for Caulk, NO-HUB and Speedi-Set		
	3(76) for Threaded		

**REGULARLY FURNISHED:**

Duco Cast Iron Body and Flashing Clamp with Bronze Standpipe and Polished Bronze Dome.

**NOTE:** Dimensions shown in parentheses are in millimeters.

**VARIATIONS:**

- Longer Standpipe (When Specified)
- Solid Standpipe -SP
- Standpipe Covered w/SS Mesh -SSM
- L Speedi-Set Service Weight
- LXH Speedi-Set Extra Heavy
- T Threaded Outlet

**OPTIONAL MATERIALS:**

- Chrome Plated Dome -CPD
- Galvanized Body -G
- Nickel Bronze Dome and Stainless Steel Standpipe -NBD
- Rough Bronze Dome -RBD

2680-CAN

DRAWN BY: PJ

CHECKED BY: TD

APPROVED BY: TD

DATE: 5-17-85

SCALE: NONE

SIZE: A

DRAWING NUMBER: S2680-CAN

B

WE CAN ASSUME NO RESPONSIBILITY FOR USE OF SUPERSEDED OR VOID DATA

DIMENSIONS ARE SUBJECT TO MANUFACTURERS TOLERANCE AND CHANGE WITHOUT NOTICE

REV.	DATE	DESCRIPTION	BY	CKD. BY
B	5-22-95	Revised and added millimeters Submittal Update	CMB	BS
A	11-17-93		EMB	BS

WEIGHT POUNDS	VOLUME CUBIC FEET

**FIGURE NUMBER**  
**2680-CAN**