

SMITH® JAY R. SMITH MFG. CO.
 DIVISION OF SMITH INDUSTRIES, INC.
 POST OFFICE BOX 3237
 MONTGOMERY, ALABAMA 36109-0237 (USA)
 TEL: 334-277-8520 FAX: 334-272-7396 www.jrsmith.com



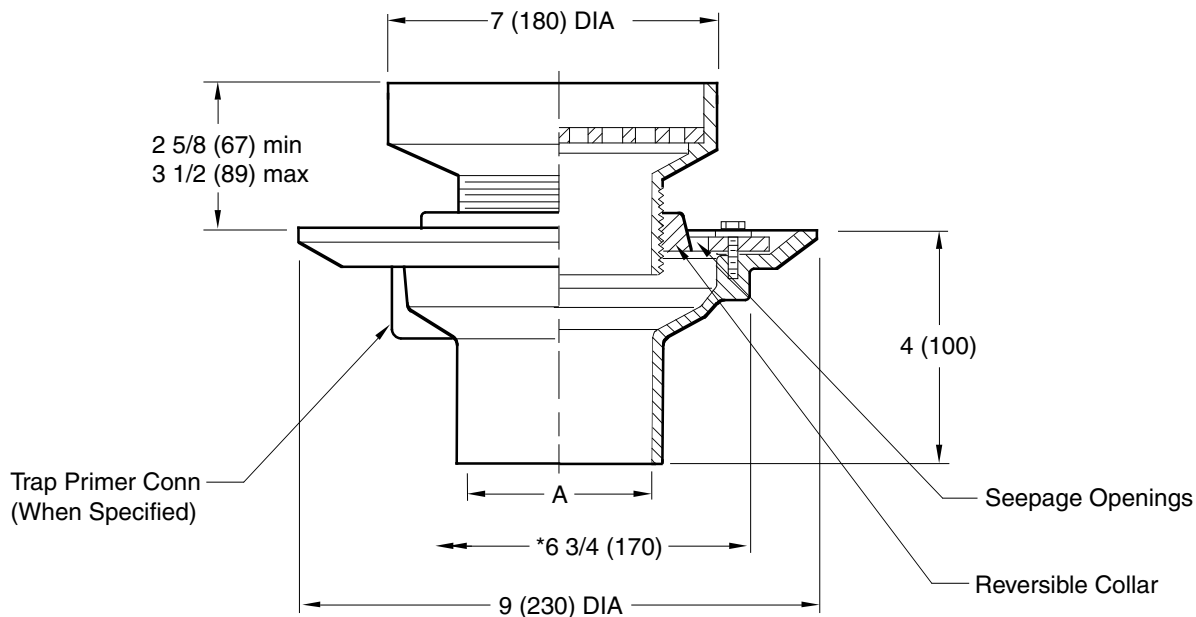
LOCATION

A
 DRAWING NUMBER S2005 (-F37)
 SIZE A
 SCALE: NONE
 DATE: 6-3-02
 APPROVED BY:
 CHECKED BY:
 DRAWN BY: RN
 2005 (-F37)
 FIGURE NUMBER

WE CAN ASSUME NO RESPONSIBILITY FOR USE OF SUPERSEDED OR VOID DATA

FLOOR DRAIN

FUNCTION: Used in a non-traffic area when a funnel type strainer head is required and space does not allow use of the 3500 Series funnel. The extended rim allows use as an anti-flood and anti-splash drip pan.



A (Pipe Size) = 02(50), 03(80), 04(100), 05(125) or 06(150)

Fig. 2005Y (-F37) NO-HUB OUTLET

NOTE: Dimensions shown in parentheses are in millimeters.
NOTE: * MIN 6 3/4 (170) hole required for core drilled applications.

REGULARLY FURNISHED:

Duco Cast Iron Body and Flashing Collar, Adjustable Strainer Head as Indicated by Suffix Letter Selected. Flush with Floor Funnel with anti-Splash Rim and Grate.

VARIATIONS:

- Trap Primer Connection -P050 1/2" (13)& -P075 3/4" (19)
- Vandal Proof Screws -U
- L Speedi-Set Service Weight 02(50), 03(80) & 04(100) sizes only
- LXH Speedi-Set Extra Heavy 02(50), 03(80) & 04(100) sizes only

OPTIONAL MATERIALS:

- Bronze Body -BB
- Chrome Plated Top -CP
- Galvanized Cast Iron Body -G
- Polished Bronze Top -PB

REV.	DATE	DESCRIPTION	BY	CKD. BY	WEIGHT POUNDS	VOLUME CUBIC FEET	FIGURE NUMBER
A	04/14/03	Added 6" Pipe Size	JJ	CL			2005 (-F37)