



# JAY R. SMITH inc.

PLUMBING & DRAINAGE PRODUCTS

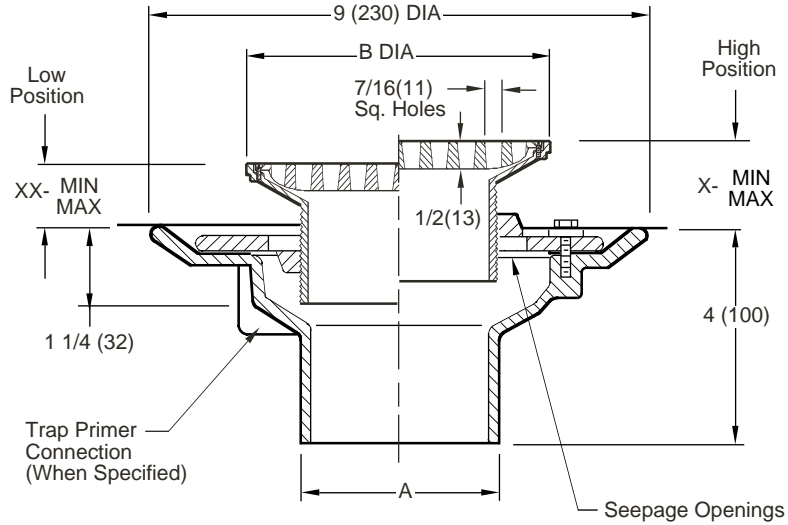
959 Alness Street, North York, Ontario M3J 2J1

TEL: (416) 736-9610 FAX: (416) 736-3789

LOCATION

## FLOOR OR SHOWER DRAIN WITH HEAVY DUTY ADJUSTABLE STRAINER HEAD

FUNCTION: Used in finished floors where light wheeled loads and or heavy foot traffic are anticipated.



A (Pipe Size) = 02 (50), 03 (80), or 04 (100)

### NO-HUB OUTLET

Fig. 2005Y-69-CAN . . . (A) ROUND TOP

Strainer Size	*Collar In High Position		*Collar In Low Position		Free Area SQ IN (SQ CM)
	X MIN	X MAX	XX MIN	XX MAX	
B DIA					ROUND
05 (125)	1 7/8 (48)	2 7/8 (73)	1 1/8 (29)	2 (51)	10 (65)
06 (150)	1 7/8 (48)	2 7/8 (73)	1 1/8 (29)	2 (51)	12 (77)

\*Collar is reversible to obtain extreme high and low strainer positions.  
Dimensions shown in parenthesis are in millimeters.

#### REGULARLY FURNISHED:

Duco Cast Iron Body with Flashing Collar and Adjustable Strainer Head with 4" (100) NPT Shank and Satin Nickel Bronze Heavy Duty Secured Square Hole Grate.

#### VARIATIONS:

- Flapper Type Backwater Valve -V
- Sediment Bucket -B
- Trap Primer Connection -P050 [1/2" (13)] & -P075 [3/4" (19)]
- Vandal Proof Screws -U
- Wide Flanged Strainer (Specify Fig. DX2005)

#### OPTIONAL MATERIALS:

- Bronze Body -BB
- Galvanized Cast Iron Body -G
- Nickel Bronze Strainer -NB
- Polished Bronze Strainer -PB

Meets Ansi Spec. A112.21-1M  
02(50), 03(80) or 04"(100) sizes only.

DRAWING NUMBER  
S2005-69-CAN

SIZE  
A

SCALE:  
NONE

DATE:  
4-17-95

APPROVED BY:

CHECKED BY:

DRAWN BY:  
CMB

2005-69-CAN

WE CAN ASSUME NO RESPONSIBILITY FOR USE OF SUPERSEDED OR VOID DATA

DIMENSIONS ARE SUBJECT TO MANUFACTURERS TOLERANCE AND CHANGE WITHOUT NOTICE

FIGURE NUMBER

REV.	DATE	DESCRIPTION	BY	CKD. BY

WEIGHT POUNDS

VOLUME CUBIC FEET

FIGURE NUMBER  
**2005-69-CAN**