



**JAY R. SMITH inc.**

PLUMBING & DRAINAGE PRODUCTS

959 Alness Street, North York, Ontario M3J 2J1  
 TEL: (416) 736-9610 FAX: (416) 736-3789

LOCATION

DRAWING NUMBER  
S1479-CAN

SIZE  
A

SCALE:  
NONE

DATE:  
3-1-01

APPROVED BY:

CHECKED BY:

DRAWN BY:  
rn

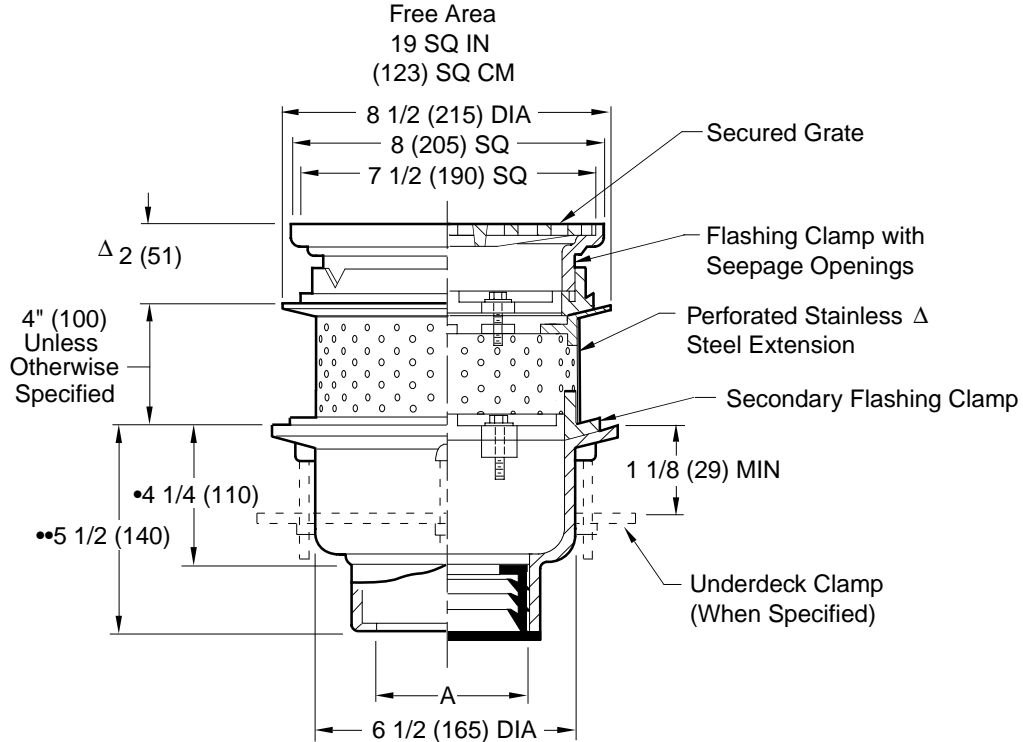
**1479-CAN**

WE CAN ASSUME NO RESPONSIBILITY FOR USE OF SUPERSEDED OR VOID DATA

# PROMENADE DECK DRAINS

## PROMENADE DECK DRAIN FOR SPECIAL ROOF APPLICATIONS

**FUNCTION:** Used in roof deck systems where the insulated membrane assembly method of waterproofing is provided. Used where built-up felt and asphalt waterproofing is installed on a flat roof construction which is designed for parking decks or promenades for recreational purposes.



A (Pipe Size) = 02(50), 03(75), 04(100)

- Fig. 1479C-CAN . . . . . CAULK OUTLET
- Fig. 1479Y-CAN . . . . . NO-HUB OUTLET

- This Dimension to Internal Stop of Speedi-Set Gasket.
- Same for Caulk, NO-HUB and Speedi-Set. 4 1/4(110) for Threaded.
- ΔAdd 1/4 "(6) when bronze top is specified.

Δ **NOTE:** Extensions 4"(100) and Higher are Regularly Furnished Perforated Stainless Steel. Extensions Less Than 4"(100) are Regularly Furnished Cast Iron with 2 Rows of Seepage Holes.

**REGULARLY FURNISHED:**

Duco Cast Iron Body, Perforated Stainless Steel Extension with Secondary Flashing Clamp, Cast Iron Top Frame and Secured Square Hole Light Duty Grate.

**NOTE:** Floor drains or area drains used to drain areas subject to rainfall should have an open area equal to twice the cross sectional area of the connecting pipe.

**VARIATIONS:**

- Expansion Joint (Specify Fig. 1710)
- Extension -E (Specify Height)
- "L" Shaped Underdeck Clamp -CL
- L Speedi-Set Service Weight
- LXH Speedi-Set Extra Heavy
- Secondary Flashing Clamp -C2
- Sump Receiver -R
- Underdeck Clamp -C
- Vandal Proof Grate -U
- T Threaded Outlet

**recommended deck opening**

with suffix-R	9(230) DIA
less suffix-R	7 3/4(195) DIA

**OPTIONAL MATERIALS:**

- Ductile Iron Grate -M
- Galvanized Cast Iron -G
- Nickel Bronze Top -NB
- Polished Bronze Top -PB

**NOTE:** Dimensions shown in parentheses are in millimeters.

FIGURE NUMBER					WEIGHT POUNDS	VOLUME CUBIC FEET	FIGURE NUMBER
							<b>1479-CAN</b>
REV.	DATE	DESCRIPTION	BY	CKD. BY			