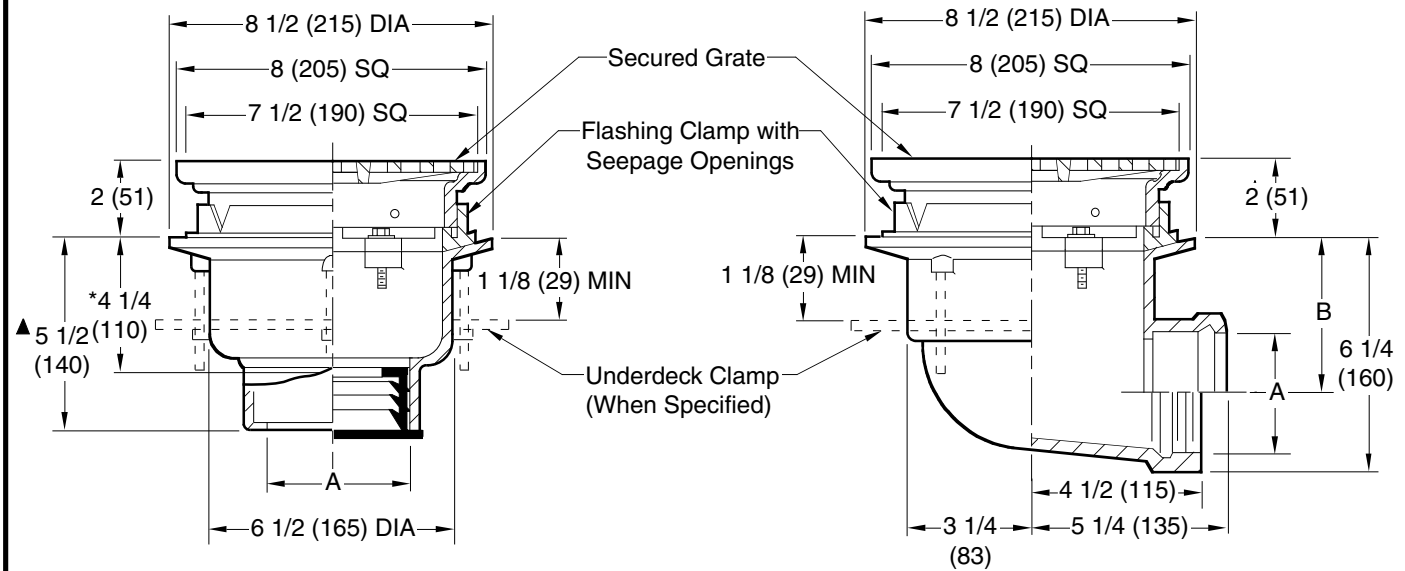


PROMENADE DECK DRAINS

SMALL - 8" (205) SQUARE

FUNCTION: For use in small roof areas which are designed for promenade or recreational purposes. Square top design is compatible with "block" patterns. This drain should be used for small roof areas only and where light rainfall is expected.

Free Area
 19 SQ IN
 (123) SQ CM



- Fig. 1470C CAULK OUTLET
- Fig. 1470Y NO-HUB OUTLET
- Fig. 1480C CAULK OUTLET
- Fig. 1480T THREADED OUTLET

A (Pipe Size) = 02(50), 03(75) or 04(100)

*This Dimension to Internal Stop of Speedi-Set Gasket.
 ▲ Same for Caulk, NO-HUB and Speedi-Set 4 1/4(110) for Threaded.

recommended deck opening	
with suffix -R	9(230) DIA
less suffix -R	7 3/4(195) DIA

A SIZE	02(50)	03(75)	04(100)
B	4 1/2 (115)	4 (100)	3 1/2 (89)

REGULARLY FURNISHED:
 Duco Cast Iron Body and Flashing Clamp with Seepage Openings and Secured Square Hole Light Duty Grate.

NOTE: Dimensions shown in parentheses are in millimeters.
NOTE: Floor drains or area drains, when used to drain exterior areas (subject to rainfall) should have an open area equal to twice the cross sectional area of the connecting pipe.

- VARIATIONS:**
- Expansion Joint (Specify Fig. 1710) (Fig. 1470 only)
 - Extension (Specify Height) -E
 - L Speedi-Set Service Weight (Fig. 1470 only)
 - LXH Speedi-Set Extra Heavy (Fig. 1470 only)
 - NO-HUB Adaptor (Specify Fig. 2646Y) (Fig. 1480 only)
 - Secondary Flashing Clamp -C2
 - Sump Receiver -R
 - Underdeck Clamp -C
 - Vandal Proof Grate -U
 - T Threaded Outlet

- OPTIONAL MATERIALS:**
- Ductile Iron Grate -M
 - Galvanized Cast Iron -G
 - Nickel Bronze Top -NB
 - Polished Bronze Top -PB

DRAWING NUMBER S1470-CAN
 SIZE A
 SCALE: NONE
 DATE: 5-24-93
 APPROVED BY: TD
 CHECKED BY: TD
 DRAWN BY: PJ
 FIGURE NUMBER 1470, 1480-CAN

WE CAN ASSUME NO RESPONSIBILITY FOR USE OF SUPERSEDED OR VOID DATA

DIMENSIONS ARE SUBJECT TO MANUFACTURERS TOLERANCE AND CHANGE WITHOUT NOTICE

REV.	DATE	DESCRIPTION	BY	CKD. BY	WEIGHT POUNDS	VOLUME CUBIC FEET	FIGURE NUMBER
	11-1-02	Rev. "V" Notch	RN				1470, 1480-CAN
	2-5-01	Rev. Opt. Mat.	RN	BS			
	05/19/00	Rev. Opt. Mat.	JJ	CL			
	5-26-99	Rev. Opt. Mat.	CMD	BS			