



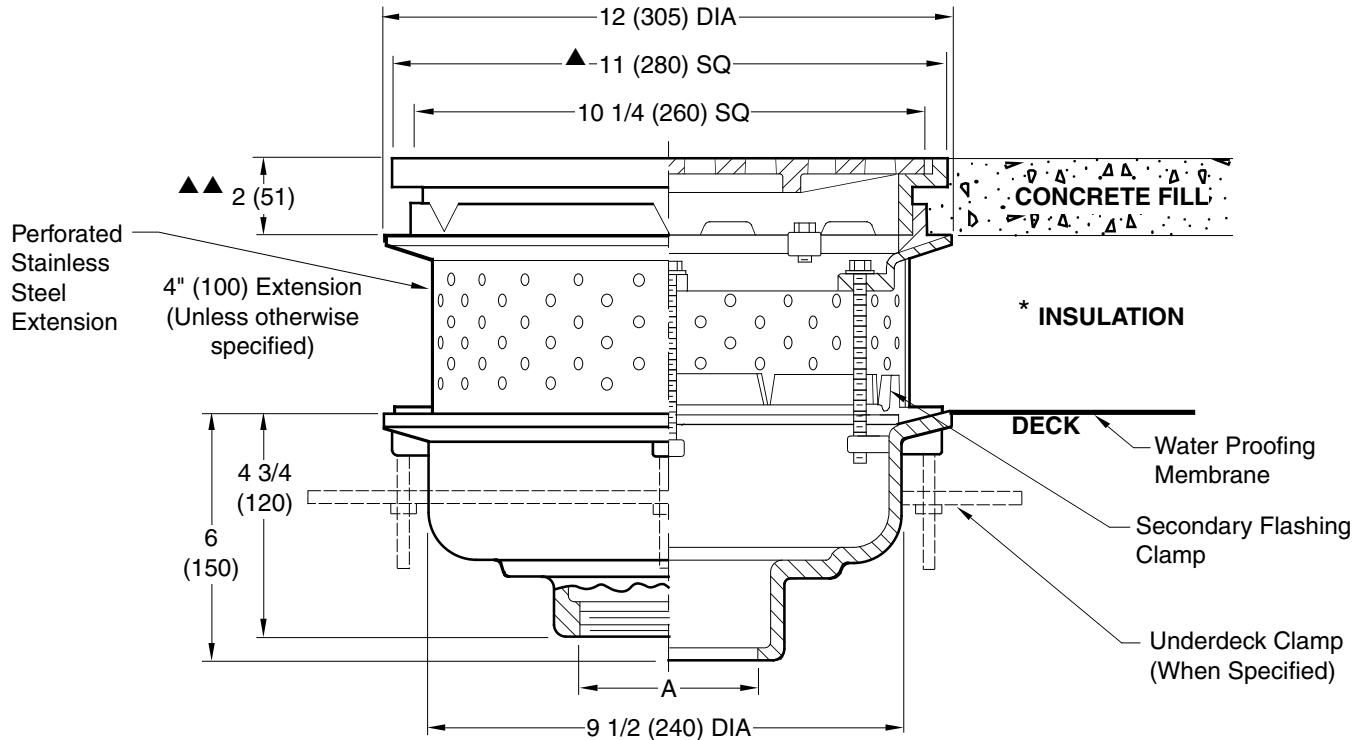
**JAY R. SMITH MFG. CO.**  
 DIVISION OF SMITH INDUSTRIES, INC.  
 POST OFFICE BOX 3237  
 MONTGOMERY, ALABAMA 36109-0237 (USA)  
 TEL: 334-277-8520 FAX: 334-272-7396 www.jrsmith.com



MEMBER OF:

LOCATION

## PROMENADE DECK DRAIN FOR INSULATED ROOF DECKS



A (Pipe Size) = 02(50),03(75),04(100),05(125) & 06(150)

Fig. 1459C-EPSS ..... CAULK OUTLET  
 Fig. 1459Y-EPSS ..... NO-HUB OUTLET

- ▲ Add 1/4"(6) when bronze top is specified.
- ▲▲ Add 1/8"(3) when bronze top is specified.

**recommended deck opening**

with suffix -R	13 (330) DIA
less suffix -R	11 (280) DIA

**REGULARLY FURNISHED:**

Duco Cast Iron Body and 4" (100) Perforated Stainless Steel Extension with Secondary Flashing Clamp and Secured Square Hole Grate.

**VARIATIONS:**

- Expansion Joint (Specify Fig. 1710)
- Extension (Specify Height) -E
- "L" Shaped Underdeck Clamp -CL
- L Speedi-Set Service Weight  
02(50), 03(75) & 04"(100) sizes only
- LXH Speedi-Set Extra Heavy  
02(50), 03(75) & 04"(100) sizes only
- NO-HUB Adaptor (Specify Fig. 2646Y)
- Sump Receiver -R
- Underdeck Clamp -C
- Vandal Proof Grate -U
- T Threaded Outlet

**OPTIONAL MATERIALS:**

- Ductile Iron Grate -M
- Galvanized Cast Iron -G
- Nickel Bronze Top -NB
- Polished Bronze Top -PB

\* On some systems this layer includes a layer of pea gravel and a layer of insulation.

**NOTE:** Dimensions shown in parentheses are in millimeters.

DRAWING NUMBER  
S1459-EPSS

SIZE  
A

SCALE:  
NONE

DATE:  
11/09/04

APPROVED BY:  
AM

CHECKED BY:  
AM

DRAWN BY:  
JJ

1459-EPSS

FIGURE NUMBER

WE CAN ASSUME NO RESPONSIBILITY FOR USE OF SUPERSEDED OR VOID DATA

DIMENSIONS ARE SUBJECT TO MANUFACTURERS TOLERANCE AND CHANGE WITHOUT NOTICE

REV.	DATE	DESCRIPTION	BY	CKD. BY

WEIGHT  
POUNDS

VOLUME  
CUBIC FEET

FIGURE NUMBER

**1459-EPSS**