

J
DRAWING NUMBER S1074+CAN
SIZE A
SCALE: NONE
DATE: 2-27-85
APPROVED BY: TD
CHECKED BY: JCS
DRAWN BY: VGD
1074-CAN
FIGURE NUMBER



JAY R. SMITH CO.

PLUMBING & DRAINAGE PRODUCTS

959 Alness Street, North York, Ontario M3J 2J1

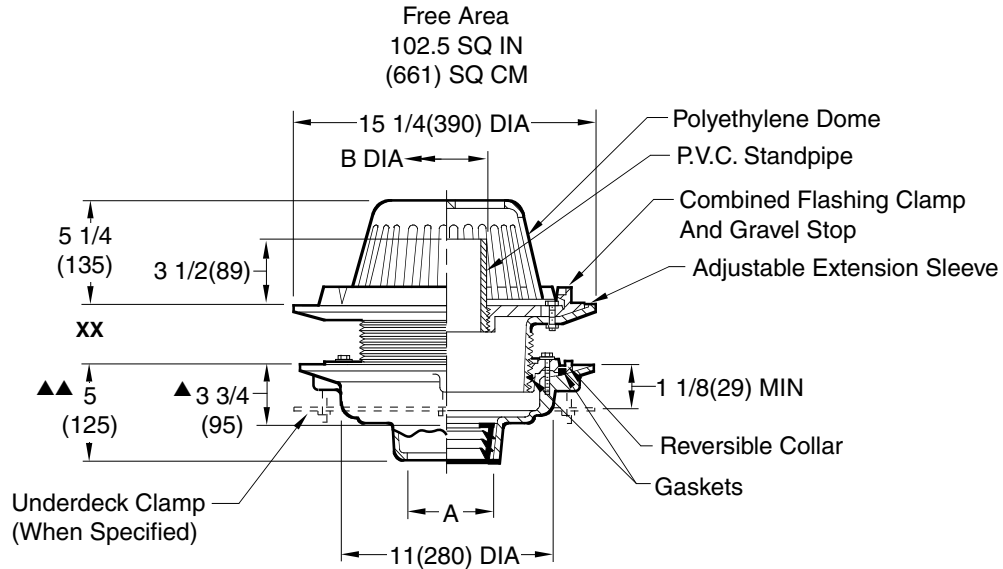
TEL: (416) 736-9610 FAX: (416) 736-3789

LOCATION

LARGE GENERAL PURPOSE ROOF DRAINS

ADJUSTABLE TOP WITH STANDPIPE

FUNCTION: Used in flat roofs of any construction where a constant height of water is desired on the roof. It is also used on conventional roofs as a safety overflow, which receives water only when the build-up is greater than the setting of the cut standpipe. Standpipe type water dam can be cut to achieve various water depths on the roof. Wide clamping surface holds flashing and roofing materials without puncturing. Large low profile dome provides sufficient free area for quick drainage of rain water and protects the drain sump and connected piping from the intrusion of debris.



- ▲ This Dimension to Internal Stop of Speedi-Set Gasket.
- ▲▲ Same for Caulk, NO-HUB and Speedi-Set. 3 3/4(95) for Threaded.

A(Pipe Size)	02(50)	03(75)	04(100)	05(125)	06(150)	08(200)
B (DIA)	4(100)	4(100)	4(100)	6(150)	6(150)	8(200)

- Fig. 1074C CAULK OUTLET
- Fig. 1074Y NO-HUB OUTLET

XX	MIN	MAX
Low Position	1 1/4(32)	2 1/2(64)
High Position	2 1/4(57)	4(100)

recommended deck opening

with suffix-R	17(430) DIA
less suffix-R	14(355) DIA

REGULARLY FURNISHED:

Duco Cast Iron Body with Adjustable Extension Sleeve, Reversible Collar, P.V.C. Standpipe, Polyethylene Dome and Combined Flashing Clamp and Gravel Stop.

VARIATIONS:

- Expansion Joint (Specify Fig. 1710)
- Extension (Specify Height) -E
 - E02, 2"(51)
 - E04, 4"(100)
 - E06, 6"(150)
- "L" Shaped Underdeck Clamp -CL
- L Speedi-Set Service Weight
02(50), 03(75) & 04(100) sizes only
- LXH Speedi-Set Extra Heavy
02(50), 03(75) & 04(100) sizes only
- Secondary Flashing Clamp -C2
- Sump Receiver -R
- Underdeck Clamp -C
- Vandal Proof Dome -U
- T Threaded Outlet

OPTIONAL MATERIALS:

- Aluminum Dome -AD
- Bronze Standpipe -BZS
- Cast Iron Dome -CID
- Cast Iron Standpipe -CIS
- Galvanized Cast Iron Body & Collar -G
- Galvanized Cast Iron Dome -CIDG
- Rough Bronze Dome -RBD

NOTE: Dimensions shown in parentheses are in millimeters.

J H G F	3-13-06 6-5-06 11/22/02 5-26-99	Revised Table Revised Dim Rev. Standpipe Height Dim. Rev. Opt. Mat.	TBW TBW JJ CMB	TWK AM BS BS	WEIGHT POUNDS	VOLUME CUBIC FEET	FIGURE NUMBER 1074-CAN
REV.	DATE	DESCRIPTION	BY	CKD. BY			

WE CAN ASSUME NO RESPONSIBILITY FOR USE OF SUPERSEDED OR VOID DATA

DIMENSIONS ARE SUBJECT TO MANUFACTURERS TOLERANCE AND CHANGE WITHOUT NOTICE