

F



JAY R. SMITH MFG CO.

DISTRIBUTED by ACUDOR/ACORN
 1125 Squires Beach Road, Pickering, ON L1W 3T9
 Tel: (905) 427-9957 Email: sales@acudoracornltd.com
 www.acudoracornltd.com

LOCATION

DRAWING NUMBER
S0447Y

SIZE
A

SCALE:
NONE

DATE:
6-14-72

APPROVED BY:

CHECKED BY:
RP

DRAWN BY:
JH

0447Y, 0457Y

FIGURE NUMBER

WE CAN ASSUME NO RESPONSIBILITY FOR USE OF SUPERSEDED OR VOID DATA

DIMENSIONS ARE SUBJECT TO MANUFACTURERS TOLERANCE AND CHANGE WITHOUT NOTICE

COMPACT FIXTURE SUPPORTS FOR SIPHON JET WATER CLOSETS

NO-HUB VERTICAL CENTER LINE FITTINGS

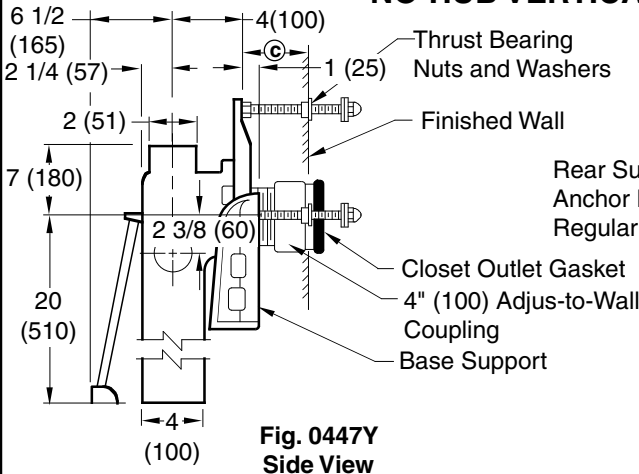


Fig. 0447Y Side View

Rear Support Lug and -M51 Anchor Foot Assembly Regularly Furnished.

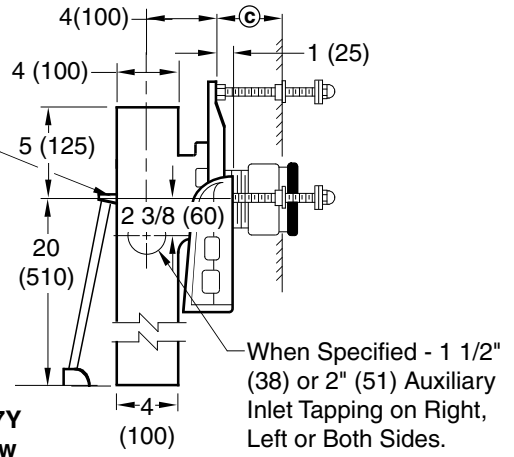
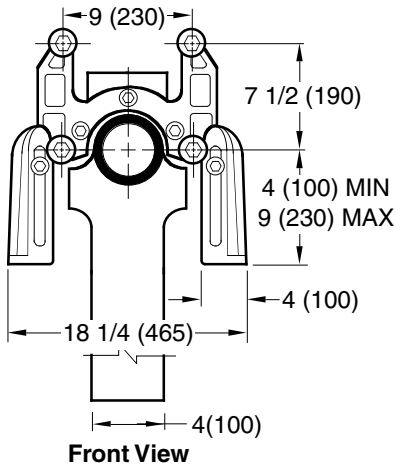


Fig. 0457Y Side View

When Specified - 1 1/2" (38) or 2" (51) Auxiliary Inlet Tapping on Right, Left or Both Sides.



Front View

- Fig. 0447Y ... NO-HUB LONG BARREL with 2" (51) Vent
- Fig. 0457Y ... NO-HUB LONG BARREL with 4" (100) Vent

- NOTE:** See reverse side for recommended setting of closet outlet connection and various modifications.
- NOTE:** When required a 2" (51) NO-HUB Aux. Inlet adaptor is available. Specify Suffix -NY
- NOTE:** Base support must be securely fastened to floor (with four 1/2" (13) bolts provided by contractor).
- NOTE:** When used with concealed flush valve, locate face plate behind supply pipe.

The water closet gasket regularly furnished is made of molded neoprene and designed to fit water closet outlet dimensions and configurations shown in ANSI Standard A112.19.2M-1995, Figure 13B. If gasket is not found to be compatible to fixture due to nonconformance of said fixture to ANSI A112.19.2M, then fixture manufacturer shall be consulted for a suitable gasket recommendation. Jay R. Smith assumes no liability for connections to fixtures which do not conform to these standards.

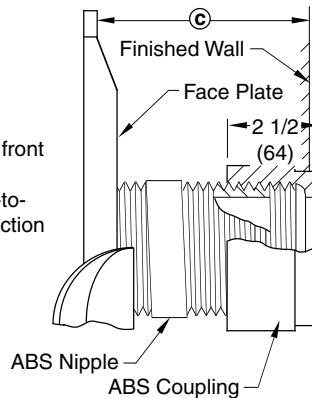
Ⓢ DIMENSION - ADJUS-TO-WALL TYPE OUTLET CONNECTION

The Smith Adjus-to-Wall outlet connection provides adjustment at the face of the wall at the time the fixture is set; thus, compensating for wall construction variations. The Ⓢ dimension is measured from the front of the face plate to the finished wall. To properly determine the length of nipple required, deduct 1" (25) from the Ⓢ dimension. The Adjus-to-Wall coupling will provide 1/2" (13) horizontal adjustment in either direction with the coupling extended 5/16" (8) past face of the finished wall.

Ⓢ dimension = 4" (100) (regularly furnished) consisting of nipple and Adjus-to-Wall coupling permitting adjustment from 3" (76) min. to 4" (100) max.

*ABS (Regularly Furnished) other lengths PVC.

NOTE: Dimensions shown in parentheses are in millimeters.



NIPPLE LENGTHS AVAILABLE

LENGTH	MIN	Ⓢ MAX
2 1/2 (64)	2 1/4 (57)	3 1/4 (83)
*3 1/4 (83)	3 (76)	4 (100)
*8 1/4 (210)	8 (205)	9 (230)
10 (255)	9 3/4 (250)	10 3/4 (275)
12 (305)	11 3/4 (300)	12 3/4 (325)
15 (380)	14 3/4 (375)	15 3/4 (400)
18 (455)	17 3/4 (450)	18 3/4 (475)

NOTE: When nipple lengths between 3 1/4" (83) and 8 1/4" (210) are specified, the 8 1/4" (210) nipple will be supplied. Nipple must be cut to specified length by others.

REV.	DATE	DESCRIPTION	BY	CKD. BY
F	7-1-98	Submittal Update	ASL	BS
E	1-27-98	Chg'd Callout	EMB	BS
D	2-26-96	Added Millimeters	EMB	BS
C	4-29-94	Revised	EMB	BS
B	7-19-93	Submittal Update	EMB	BS

WEIGHT POUNDS

VOLUME CUBIC FEET

FIGURE NUMBER

0447Y, 0457Y

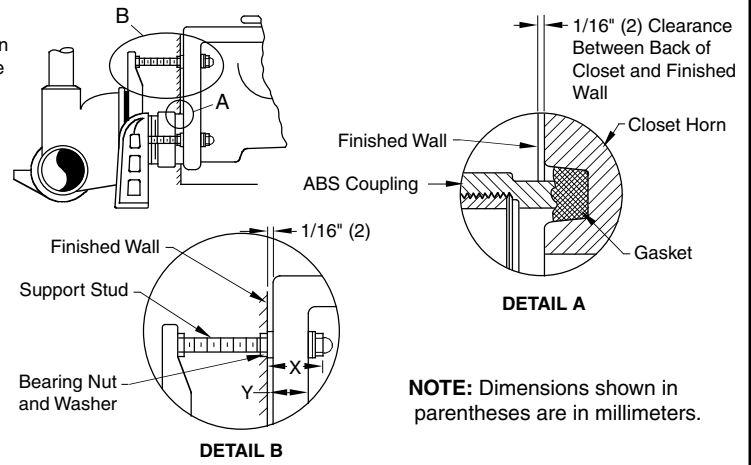
MODIFICATIONS & VARIATIONS FOR SIPHON JET WATER CLOSETS

RECOMMENDED SETTING OF CLOSET OUTLET CONNECTION AND FIXTURE STUDS

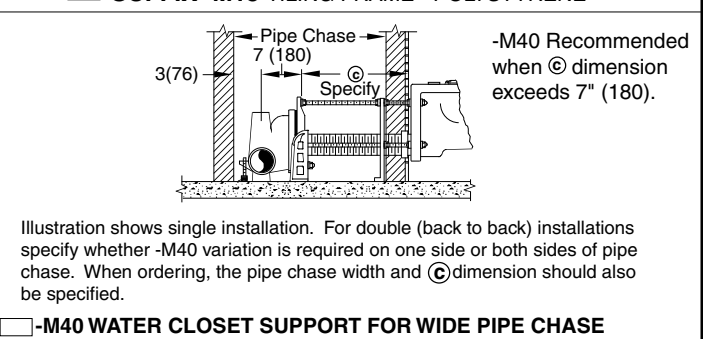
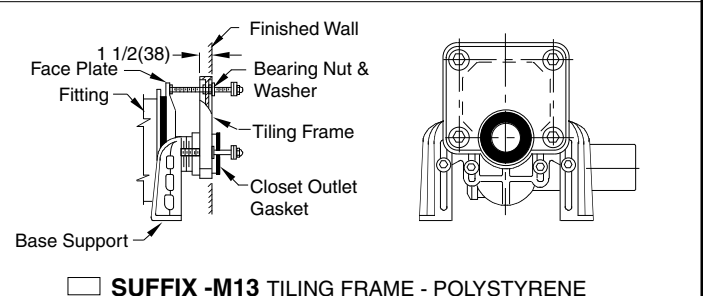
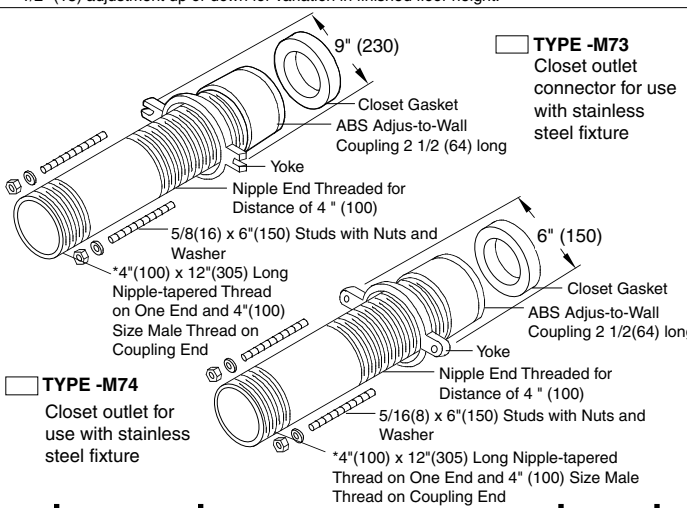
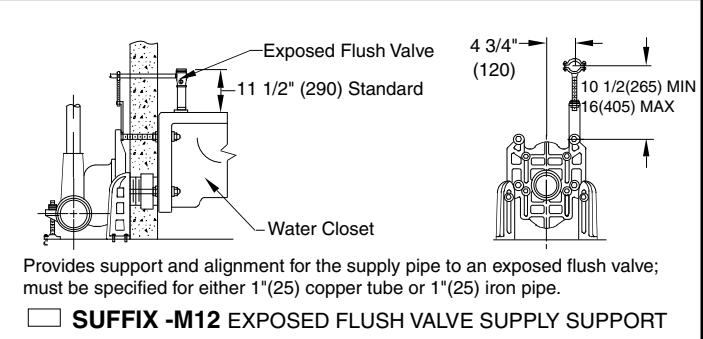
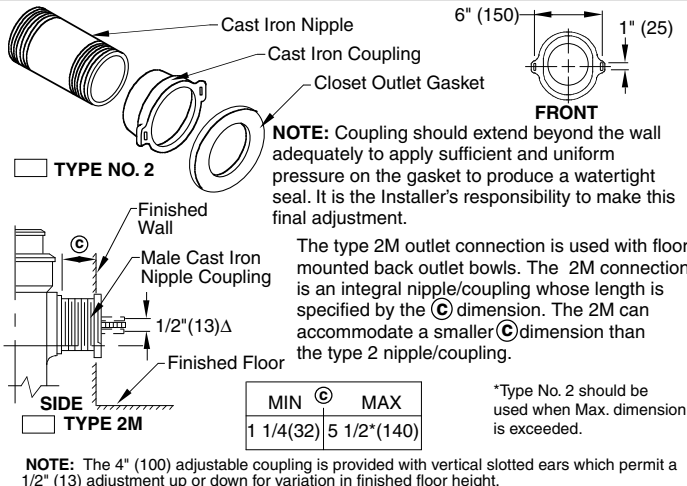
Manufacturers have slight differences in the depth of the closet horn and flange thickness of their closets. Usually the fixture support closet connection should extend 5/16" (8) beyond face of finished wall (Dimension "R") and the fixture studs 2 1/4" (57) (Dimension "X"). For exact dimensions please use the formulas below.

DETAIL A Formula for "R" is: $S + 1/16" (2) - D = R$.
 S = Depth of closet horn
 1/16" (2) = Distance closet is to set away from finished wall.
 D = 1/2" (13) for felt gasket and 3/8" (10) for neoprene gasket.
 R = Distance coupling should extend beyond finished wall.
 NOTE: When the fixture is installed, closet gasket must be compressed sufficiently to assure a gas and water-tight seal.

DETAIL B Formula for "X" is: $Y + 1/16" (2) + 9/16" (14) = X$.
 Y = Thickness of closet wall flange.
 1/16" (2) = Distance closet is to set away from finished wall.
 X = Distance supporting stud should extend beyond finished wall.
 NOTE: Bearing nuts and washers must be set to take full loading from the fixture allowing 1/16" (2) clearance between fixture and wall.



OPTIONAL CLOSET OUTLET CONNECTIONS



DRAWING NUMBER: S0100BS
 SIZE: A
 SCALE: NONE
 DATE: 1-16-85
 APPROVED BY: JD
 CHECKED BY: CR
 DRAWN BY: VGD
 100/400 Series Back Sheet

WE CAN ASSUME NO RESPONSIBILITY FOR USE OF SUPERSEDED OR VOID DATA
 DIMENSIONS ARE SUBJECT TO MANUFACTURERS TOLERANCE AND CHANGE WITHOUT NOTICE

REV.	DATE	DESCRIPTION	BY	CKD. BY	WEIGHT POUNDS	VOLUME CUBIC FEET	FIGURE NUMBER
D	2-27-12	Rev. Note Type 2 outlet	TBW	AM			100/400 Series Back Sheet
C	12-10-03	Added Note	RN	CL			
B	2-26-96	Added Millimeters	EMB	BS			