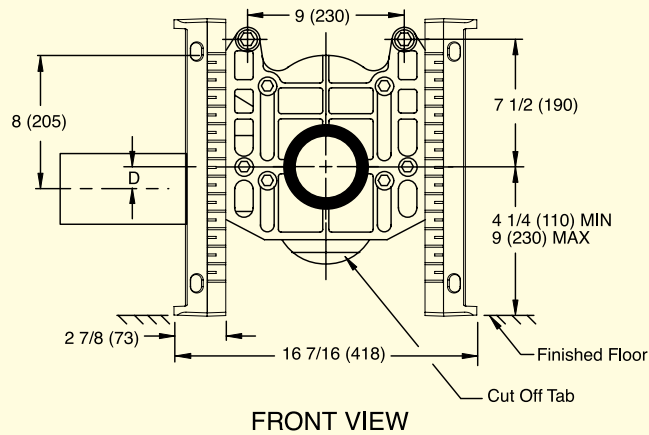


# -M54 SIDE MOUNTED LEGS AND -M54-M58 FACEPLATE FOR WATER CLOSET SUPPORTS

## -M54-M58 FACEPLATE WITH ADJUSTABLE NIPPLE AND "O" RING



**Fig. # -M54-M58 Faceplate, -M54 Side Mounted Legs, and -M51 Anchor Foot**

### Product Features:

#### M54 Side Mounted Leg:

- Symmetric construction.
- Increased load bearing capability.
- One bolt per leg allowing quicker and easier prefabrication.
- Incremental markings in 1/2" increments.
- Quicker rough-in for the installing contractor.
- Three Anchor Points for Secure Installation.

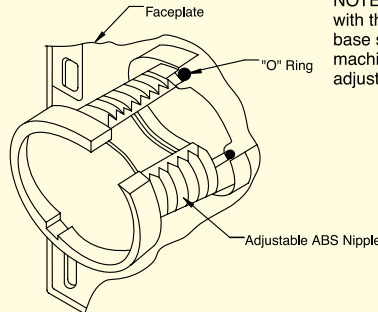
#### M54-M58 Faceplate with "O" Ring Seal:

- Integral adjustable wall coupling, nipple, and test cap.
- Adjustment at the faceplate rather than at the rear of the water closet (coupling).
- 10 inch-long nipple cover various installations.
- Enhanced sealing with an "O" ring at the faceplate.



#### M51 Anchor Foot:

- Provides back anchor support for any single horizontal or vertical fixture support.
- Consists of a 3/8" stud and a cast iron anchor foot.



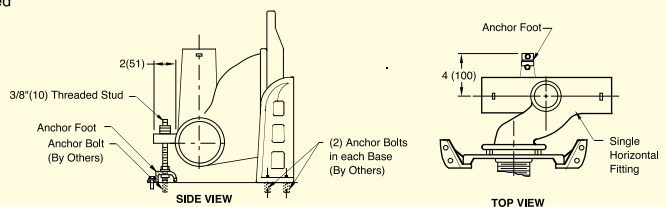
NOTE: The M54-M58 suffix is furnished with the M54 faceplate and side mount base supports, with the faceplate machined for the "O" ring seal and the adjustable 10" ABS nipple

NOTE: Base support must be securely anchored to floor (with 1/2" (13) bolts, (4) bolts for double, (2) each wall and (2) bolts for single, (1) each base support. Bolts provided by contractor).

NOTE: All single supports shall have the rear support lug anchored by contractor to assure a rigid installation. The rear support completes the 3 point anchoring system for ultimate stability of the installation.

NOTE: Dimensions shown in parentheses are in millimeters.

### -M51 ANCHOR FOOT ASSEMBLY FOR USE WITH SINGLE HORIZONTAL FITTINGS



-M54/-M54-M58/-M51 can be used with Figure Number Series 0209-0210-0220-0230-0240-0250.

### Horizontal Water Closet Supports - Pre-Fabrication Installations



Fig. No. 0210RY-M54, 0210DY-M54 and 0710. Angle iron Pre-Fab with PVC piping.



Fig. No. 0210RY-M54. Board mounted water closet with water supply lines.