

N

SMITH® JAY R. SMITH MFG. CO.®
 DIVISION OF SMITH INDUSTRIES, INC.
 POST OFFICE BOX 3237
 MONTGOMERY, ALABAMA 36109-0237 (USA)
 TEL: 334-277-8520 FAX: 334-272-7396 www.jrsmith.com



LOCATION

DRAWING NUMBER
a9810

SIZE
A

SCALE:
NONE

DATE:
8-11-93

APPROVED BY:

CHECKED BY:
PACE

DRAWN BY:
CMB

9810

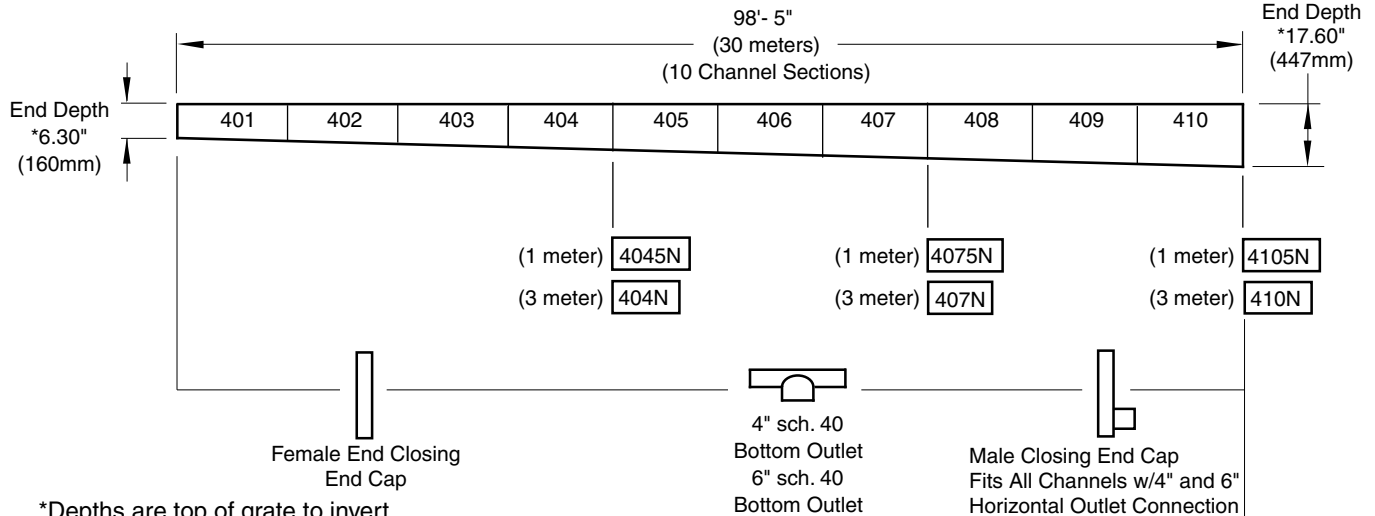
FIGURE NUMBER

WE CAN ASSUME NO RESPONSIBILITY FOR USE OF SUPERSEDED OR VOID DATA

DIMENSIONS ARE SUBJECT TO MANUFACTURERS TOLERANCE AND CHANGE WITHOUT NOTICE

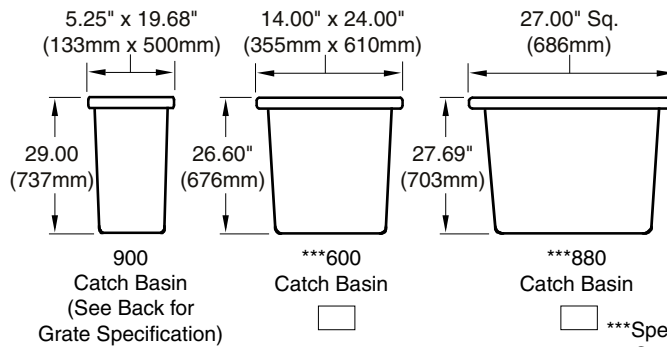
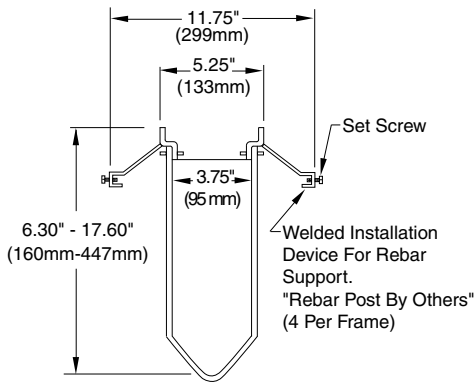
6" WIDE 9810 ADVANCED HYDRAULIC FIBERGLASS TRENCH SYSTEM MEDIUM CAPACITY

FUNCTION: Used in all surface drainage and may be assembled in any length utilizing 3 meter sloped, 3 meter non-sloped, and 1 meter non-sloped channels to reduce installation time and labor.



*Depths are top of grate to invert. Dimensions shown in parentheses are in millimeters.

Note: This trench drainage system is designed for "on grade applications only", as there are no provisions for a flashing flange or flashing clamp.



REGULARLY FURNISHED:
 3 Meter (9'10") Medium Capacity Polyester Fiberglass Channel with Sloped V-Shaped Bottom Surface with Male/Female End Connections Providing a High Integrity Lap Joint. Duco Coated Welded Steel Frame Support System. Supplied with Quick-Lock Secured Grate per your Specifications.

** When Closing End Cap or Horizontal Outlet Outlet Cap are Specified an End Frame Must Be Specified Also.

- VARIATIONS:**
- Grate Specifications (See Back)
 - ** Closing 4", 6" Horizontal Outlet Cap
 - ** Closing End Cap (Female)
 - Catch Basin (See Above)
 - Bottom Outlet 4", 6"
 - Duco Coated Steel End Frame
 - Galvanized Steel End Frame
 - Stainless Steel End Frame
 - 900 Catch Basin
 - 660 Catch Basin
 - 880 Catch Basin
 - Plastic Bucket 900 Catch Basin
 - Plastic Bucket 660 Catch Basin
 - Plastic Bucket 880 Catch Basin

- ***Specify Catch Basin Grate for 660 or 880
- Ductile Iron Slotted Grate
- Galvanized Steel Bar Grate
- Stainless Steel Bar Grate

OPTIONAL CHANNEL MATERIALS:

- Vinylester Resin

OPTIONAL RAIL MATERIALS:

- Stainless Steel
- Galvanized Steel



N	9-27-07	Revised Drawing	JJ	MD
M	9-14-06	Updated DWG	RN	PJ
L	6-16-05	Added Note	TBW	PJ
REV.	DATE	DESCRIPTION	BY	CKD. BY

WEIGHT POUNDS	VOLUME CUBIC FEET
---------------	-------------------

FIGURE NUMBER
9810

N

SMITH® JAY R. SMITH MFG. CO.®
 DIVISION OF SMITH INDUSTRIES, INC.
 POST OFFICE BOX 3237
 MONTGOMERY, ALABAMA 36109-0237 (USA)
 TEL: 334-277-8520 FAX: 334-272-7396 www.jrsmith.com



MEMBER OF:

LOCATION

6" WIDE 9810 ADVANCED HYDRAULIC FIBERGLASS TRENCH SYSTEM MEDIUM CAPACITY

DRAWING NUMBER
a9810BS

SIZE
A

SCALE:
NONE

DATE:
8-11-93

APPROVED BY:

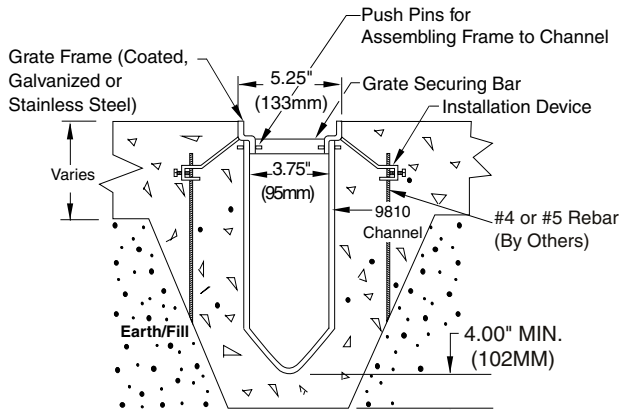
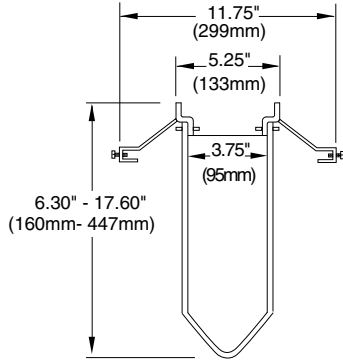
CHECKED BY:
PACE

DRAWN BY:
CMB

9810BS

WE CAN ASSUME NO RESPONSIBILITY FOR USE OF SUPERSEDED OR VOID DATA

DIMENSIONS ARE SUBJECT TO MANUFACTURERS TOLERANCE AND CHANGE WITHOUT NOTICE



TYPICAL INSTALLATION CROSS-SECTION

- Light Duty, DIN 19580 **Class A** - 3,500 lbs - 70 psi
 For pedestrian, wheel chair and bicycle traffic
- 9870-410-GP- 1/4 dia. perforated galv. steel grate (27.60 SQ. IN.)
 - 9870-420-G - 3 1/4x 3/8 slotted galv. steel grate (42.60 SQ. IN.)
 - 9870-450-SS- 3 1/4 x 3/8 slotted stainless steel grate (42.60 SQ. IN.)
 - 9870-451-SSPA- 1/4 dia. perforated stainless steel grate (27.60 SQ. IN.)
 - 9870-445-SSADA- 1 13/16 x 3/16 longitudinal stainless steel slot bar grate (95.00 SQ. IN.)
 - 9870-494-PADA- 1 3/4 x 5/16 longitudinal slot black polypropylene grate (28.0 SQ. IN.)

Note: This trench drainage system is designed for "on grade applications only", as there are no provisions for a flashing flange or flashing clamp.

- Heavy Duty, DIN 19580 **Class C** -56,000 lbs - 1,162 psi
 For commercial pneumatic tire traffic patterns, forklifts and tractor trailers
- 9870-405-GM- 1 3/16 x 1/2 longitudinal galv. steel slot bar grate (125.30 S Q. IN.)
 - 9870-411-GPHD- 1/4 dia. perforated galv. steel grate (27.60 SQ. IN.)
 - 9870-425-GHD- 3 1/4 x 3/8 slotted galv. steel grate (42.60 SQ. IN.)
 - 9870-430-SSM- 1 3/16 x 1/2 longitudinal stainless steel slot bar grate (125.30 SQ. IN.)
 - 9870-455-SSHD- 3 1/4 x 3/8 slotted stainless steel grate (42.60 SQ. IN.)
 - 9870-465-SSP-1/4 dia. perforated stainless steel grate (27.60 SQ. IN.)
 - 9870-477-ML- 1 3/4 x 1 longitudinal ductile iron slotted grate (42.00 SQ. IN.)
 - 9870-479-MD- Mosaic pattern ductile iron grate (19.50 SQ. IN.)
 - 9870-485-PB- 1/4 dia. perforated brass grate (27.60 SQ. IN.)
 - 9870-492-RC- 1 1/2x 13/16 slotted resin composite grate (16.30 SQ. IN.)

Extra Heavy Duty, DIN 19580 **Class E**- 135,000 lbs - 2,788 psi
 For commercial solid tire traffic patterns, forklifts and impacts from steel struts or metal wheels.

- 9870-435-GHDE- 3 1/4 x 3/8 slotted galv. steel grate (42.60 SQ. IN.)
- 9870-461-M- 3 15/16 x 3/8 ductile iron slotted grate (21.00 SQ. IN.)
- 9870-477-MADA- 1 3/4 x 5/16 longitudinal ductile iron slotted grate (14.30 SQ. IN.)
- 9870-490-SSHDE- 3 1/4 x 3/8 slotted stainless steel grate (42.60 SQ. IN.)

Deep End Depths 9810 System			
Channel Number	Deep End in.	Depth* mm	Slope %
401	7.43	189	1.0%
402	8.56	217	1.0%
403	9.69	246	1.0%
404	10.82	275	1.0%
#404N	10.82	275	0.0%
##4045N	10.82	275	0.0%
405	11.95	304	1.0%
406	13.08	332	1.0%
407	14.12	361	1.0%
#407N	14.12	361	0.0%
##4075N	14.12	361	0.0%
408	15.34	390	1.0%
409	16.47	418	1.0%
410	17.60	447	1.0%
#410N	17.60	447	0.0%
##4105N	17.60	447	0.0%

*NOTE: Depths are top of grate to invert.
 For depth at shallow end, subtract .87".
 #Neutral 3 Meter Channel
 ##Neutral 1 Meter Channel



REV.	DATE	DESCRIPTION	BY	CKD. BY	WEIGHT POUNDS	VOLUME CUBIC FEET	FIGURE NUMBER
N	9-27-07	Revised Drawing	JJ	MD			9810BS
M	6-16-05	Added Note	TBW	PJ			
L	8-18-04	Revised Grate Selection	TBW	PJ			