

E

SMITH® JAY R. SMITH MFG. CO.
 DIVISION OF SMITH INDUSTRIES, INC.
 POST OFFICE BOX 3237
 MONTGOMERY, ALABAMA 36109-0237 (USA)
 TEL: 334-277-8520 FAX: 334-272-7396 www.jrsmith.com

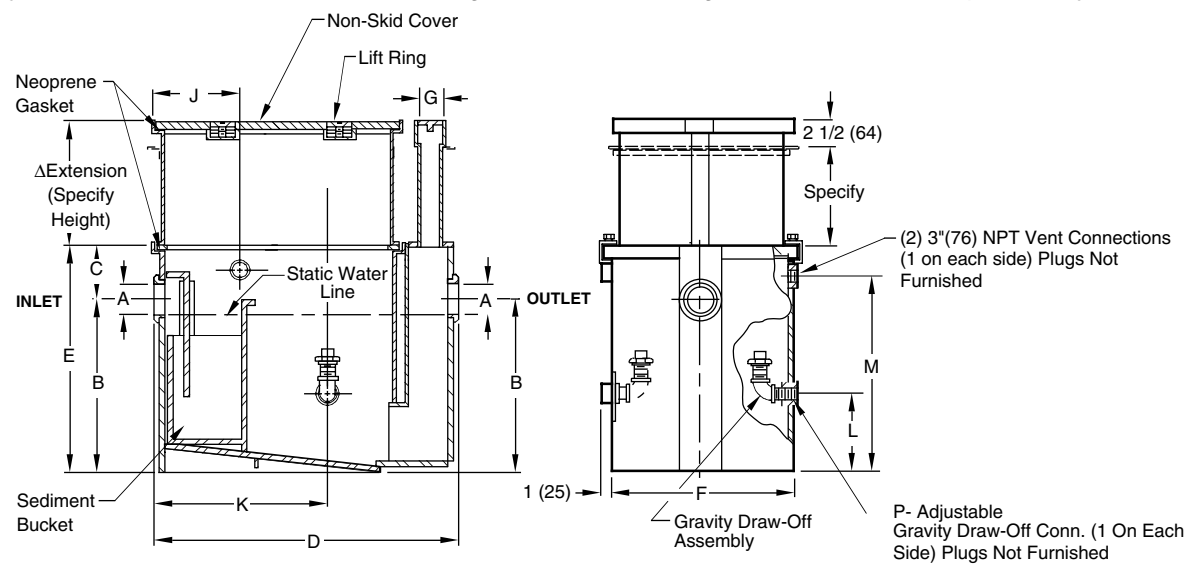


LOCATION

OIL INTERCEPTORS

ALL STEEL OIL INTERCEPTORS

FUNCTION: Large capacity oil interceptors are used in large garages, service areas and industrial plants where waste laden with oil and sediment must be intercepted. The intercepted oils are drawn off by gravity to a storage tank or container. Any sediment which is included in the discharge is collected in a large sediment bucket and periodically removed.



NOTE: Interceptor shall be vented on outlet side per local code requirements.

PCN/ Fig. No.	GPM Flow Rate	Inlet and Outlet Size	Dimensions						C.O. Plug Size	Dimensions					Draw- Off
			Roughing Dimensions			Body				G	J	K	L	M	
			A*	B	C	D	Height E	Width F							
8560 (-E)	75	04(100)	21 1/2(545)	15 1/2(395)	50 3/4(1290)	37(940)	30 1/2(775)	3(76)	21(535)	28 1/4(720)	13(330)	32 3/4(830)	2(51)		
8565 (-E)	100	04(100)	27(685)	16 1/2(420)	54 3/4(1390)	43 1/2(1105)	33 1/2(850)	3(76)	23(585)	30 1/4(770)	18 1/2(470)	39 1/4(995)	2(51)		
8570 (-E)	150	05(125)	33(840)	17 1/2(445)	60 3/4(1543)	50 1/2(1283)	38 1/2(980)	4(100)	25 1/2(650)	34 1/4(870)	23 1/2(595)	46 1/4(1175)	2 1/2(64)		
8575 (-E)	200	05(125)	37(940)	17 1/2(445)	67 3/4(1720)	54 1/2(1385)	43 1/2(1105)	4(100)	29(735)	38 1/4(970)	27 1/2(700)	50 1/4(1275)	2 1/2(64)		
8580 (-E)	250	05(125)	40(1015)	18(455)	73 3/4(1875)	58(1473)	47 1/2(1205)	4(100)	32(815)	42 1/4(1075)	30 1/2(775)	53 3/4(1365)	2 1/2(64)		
8585 (-E)	350	05(125)	43 1/2(1105)	18(455)	85 3/4(2178)	61 1/2(1562)	54 1/2(1385)	4(100)	38(965)	50 1/4(1275)	34(865)	57 1/4(1455)	2 1/2(64)		
8590 (-E)	500	06(150)	48(1220)	18(455)	103 1/4(2623)	66(1615)	64 1/2(1640)	5(125)	46(1170)	62 1/4(1580)	38(965)	61 3/4(1570)	2 1/2(64)		

*Available with larger inlet and outlet when specified.
 Δ Extension Regularly Furnished integrally.

REGULARLY FURNISHED:
 Steel Interceptor and Extension with Gray Duco Coating Inside and Outside and Flow Control Fitting.

VARIATIONS:
 Anchor Flange -F
 Flange and Flashing Clamp -F-C
 NO-HUB Adaptor (4) Req'd (Specify Fig. 2646Y)
 Traffic Rated Cover-H20

OPTIONAL MATERIALS:
 Acid Resistant Coating Inside - ARI
 Acid Resistant Coating Outside - ARO
 Acid Resistant Coating Inside and Outside - ARIO
 Aluminum Cover -AC

NOTE: Dimensions shown in parentheses are in millimeters.

DRAWING NUMBER
S8560 (-E)

SIZE
A

SCALE:
NONE

DATE:
11-14-89

APPROVED BY:
CR

CHECKED BY:
TD

DRAWN BY:
EMB

8560 (-E)

FIGURE NUMBER

WE CAN ASSUME NO RESPONSIBILITY FOR USE OF SUPERSEDED OR VOID DATA
DIMENSIONS ARE SUBJECT TO MANUFACTURERS TOLERANCE AND CHANGE WITHOUT NOTICE

E	5-5-06	Revised Drawing & Note	RN	CL	WEIGHT POUNDS	VOLUME CUBIC FEET	FIGURE NUMBER 8560 (-E)
D	2-3-05	Revised Variations	RN	CL			
C	11-17-03	Added To Notes	RN	CL			
B	11-13-03	Revised Table	RN	CL			
REV.	DATE	DESCRIPTION	BY	CKD. BY			