

INSTRUCTIONS

CLEANING AND MAINTENANCE INSTRUCTIONS

SOLIDS INTERCEPTORS

Fig. Numbers 8710, 8714, 8715, 8730

Top Cleaning -Fig. 8710 & 8715

These units are installed either resting on floor or partially recessed. Bucket assembly lifts out from top of unit.

- 1) Loosen cover by rotating locking device counter clockwise. Remove cover when fully rotated.
- 2) Remove strainer assembly. Assembly has (2) screens, one coarse and one fine.
- 3) Dispose of accumulated solids in refuse container. Remove screens for cleaning and scraping if necessary.
- 4) Replace screens. Make certain coarse screen is facing inlet to unit.
- 5) Insert strainer assembly back into body. Be certain low inlet to assembly lines up with body inlet.
- 6) Inspect cover gasket before cover is re-installed. Gasket must be in good condition and in place. If condition is poor, replace.
- 7) Re-install cover and tighten down firmly with locking device. This insures cover being air and watertight.
- 8) Run water through connecting sink so that water level in interceptor is re-established.

Top Cleaning -Fig. 8714

These units are installed either resting on floor or fully or partially recessed. Bucket lifts vertically out from top of unit.

- 1) Remove cover by unscrewing securing screws.
- 2) Remove perforated stainless steel bucket. Dispose of accumulated solids and thoroughly clean bucket.
- 3) Position bucket back into body.
- 4) Re-install cover and tighten securing screws firmly.

Suspended Type -Fig. 8730

Strainer Screen assembly is removed from bottom

- 1) Drain water through 1/4" opening on bottom of unit.
- 2) Remove strainer assembly by loosening four (4) wing screws. Complete assembly will then drop down.
- 3) Clean and re-assemble same as for Fig. 8710 and 8715.
- 4) Carefully check cover gasket. Replace if necessary.

When To Clean

Cleaning frequency must be determined by user. Based on the amount of solids in discharge and volume of discharge. Once this frequency is established, a cleaning schedule should be faithfully maintained.



JAY R. SMITH MFG. CO.
DIVISION OF SMITH INDUSTRIES, INC.
POST OFFICE BOX 3237
MONTGOMERY, ALABAMA 36109-0237 (USA)
TEL: 334-277-8520 FAX: 334-272-7396 www.jrsmith.com





JAY R. SMITH MFG. CO.
 DIVISION OF SMITH INDUSTRIES, INC.
 POST OFFICE BOX 3237
 MONTGOMERY, ALABAMA 36109-0237 (USA)
 TEL: 334-277-8520 FAX: 334-272-7396 www.jrsmith.com



MEMBER OF:

FLUSH WITH FLOOR OR ON THE FLOOR TYPES

FUNCTION: Provides a means of collecting solids such as metal chips plaster and stones before entering the drain line preventing line stoppage. Fig. 8710 and Fig. 8714 small capacity interceptors are ideal for dental offices or similar establishments where the unit can be mounted directly under the sink to recover precious metals as well as intercept harmful debris. Fig. 8715 larger capacity interceptors are ideal for hospitals where a greater amount of solids is anticipated in the drainage water. Fig. 8710 and 8715 units are cleaned by removing cover and lifting strainer and screen assembly vertically out of body. Fig. 8714 has an internal deep seal trap and is cleaned by removing cover and lifting sediment bucket vertically out of the body.

REGULARLY FURNISHED:

White Duco Coated Cast Iron Body and Aluminum Gasketed Cover and Sediment Strainer with Removable Stainless Steel Screens.

OPTIONAL MATERIALS:

Acid Resistant Coating Inside and/or Outside.

NOTE: Allow 9 1/4" above Interceptor for Removal of Strainer.

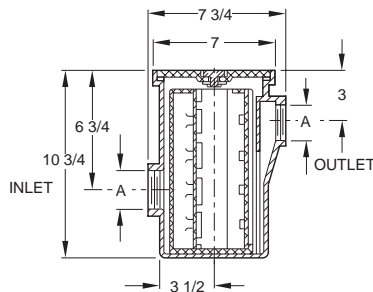


Fig. 8710

A (Pipe Size) = 1 1/2 or 2

REGULARLY FURNISHED:

White Duco Coated Cast Iron Body and Cover with Perforated stainless Steel Bucket.

VARIATIONS:

Fine Mesh Screen Bucket Liner

OPTIONAL MATERIALS:

Acid Resistant Coating Inside and/or Outside

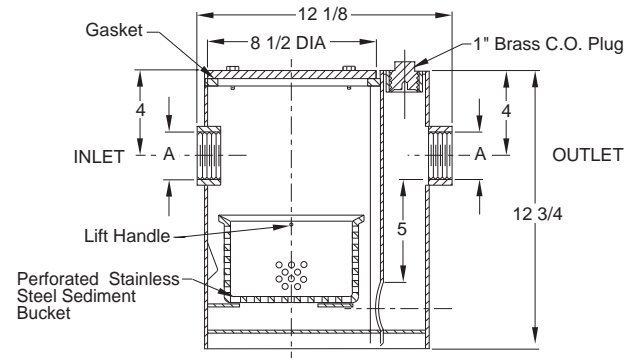


Fig. 8714

A (Pipe Size) = 1 1/2 or 2

NOTE: Allow 14" above Interceptor for Removal of Strainer.

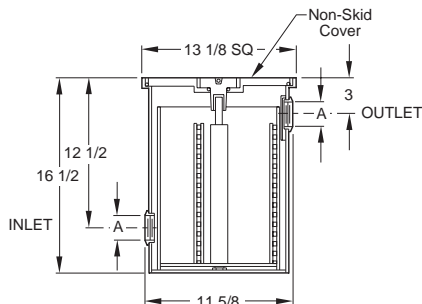


Fig. 8715

A (Pipe Size) = 1 1/2 or 2

REGULARLY FURNISHED:

White Duco Coated Steel Body and Sediment Strainer with Removable Stainless Steel Screens and Cast Iron Cover.

OPTIONAL MATERIALS:

Cast Iron Body
 Aluminum Gasketed Cover

SUSPENDED TYPE

FUNCTION: Compact design makes this unit particularly adaptable for use directly under the fixture in place of the regular "P" Trap. Unit will intercept all types of solids and precious metals. Interceptor is cleaned and inspected by removing bottom sediment strainer plate and dropping entire assembly.

REGULARLY FURNISHED:

White Duco Coated Steel Body and Sediment Strainer with Removable Stainless Steel Screens and Cast Iron Cover.

OPTIONAL MATERIALS:

Acid Resistant Coating Inside and/or Outside

NOTE: Allow 8 1/2" below Interceptor for Removal of Strainer.

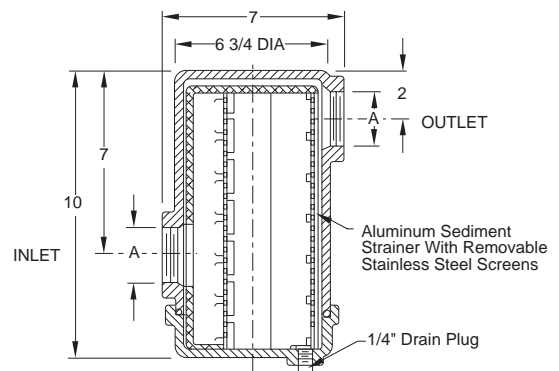


Fig. 8730

A (Pipe Size) = 1 1/2 or 2