

1/4 TURN QUARTERHORSE NON-FREEZE WALL HYDRANT

BRONZE BOX TYPE "TWIN-TEMP" FOR HOT AND COLD WATER

FUNCTION: Provides positive non-freeze protection where water is required at the outside of the building. Ideal for use in food handling areas, dairies and other places where both hot and cold water are desired. The recessed box conceals the hose connection and operating mechanisms. 1/4 turn of the key allows full flow to be obtained. The locking cover prevents unauthorized use.

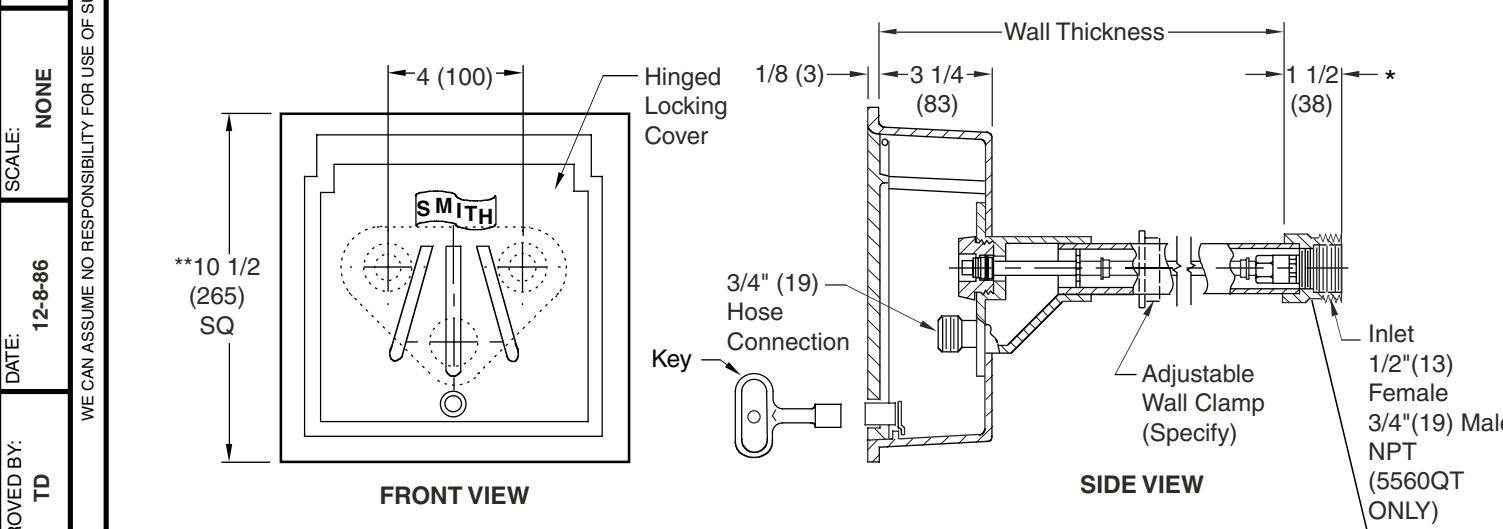


Fig. 5560QT 1/2"(13) FEMALE & 3/4"(19) MALE INLET
Fig. 5561QT 1"(25) MALE NPT INLET *

* When specifying a 5561QT add 3/4" (19) to length of inlet connection as shown.

- REGULARLY FURNISHED:** Bronze Nickel Plated Quarter Turn Non-Freeze "Twin-Temp" Hydrant with Hose Connection, "T" Handle Key, and Bronze Box with Chrome Plated Face, and Inlet Size Furnished as Indicated by Figure Number Selected.
- VARIATIONS:** Adjustable Wall Clamp -WC, Cylinder Lock -CL, 1" (25) Hose Connection -HC1, 3/4" (19) Vacuum Breaker -H, "Water" Cast On Cover -W
- OPTIONAL MATERIALS:** Nickel Bronze Box -NB, Polished Bronze Hydrant -PB, Rough Bronze Box -RB

- NOTES:**
- **Recommended Wall Opening 9 3/4"(250) x 9 3/4"(250).
 - When ordering, specify wall thickness in 2"(51) increments as follows: 6(150), 8(205), 10(255), 12(305), 14(355), 16(405), 18(455), 20(510), 22(560) or 24(610). When wall clamp -WC is desired, increase wall thickness dimension by 2"(51).
 - For 6"(150) wall use 5560QT-SAP or 5561QT-SAP.
 - All Jay R. Smith hydrants are manufactured with "NO-LEAD" brazing rings and USDA approved lubricants.

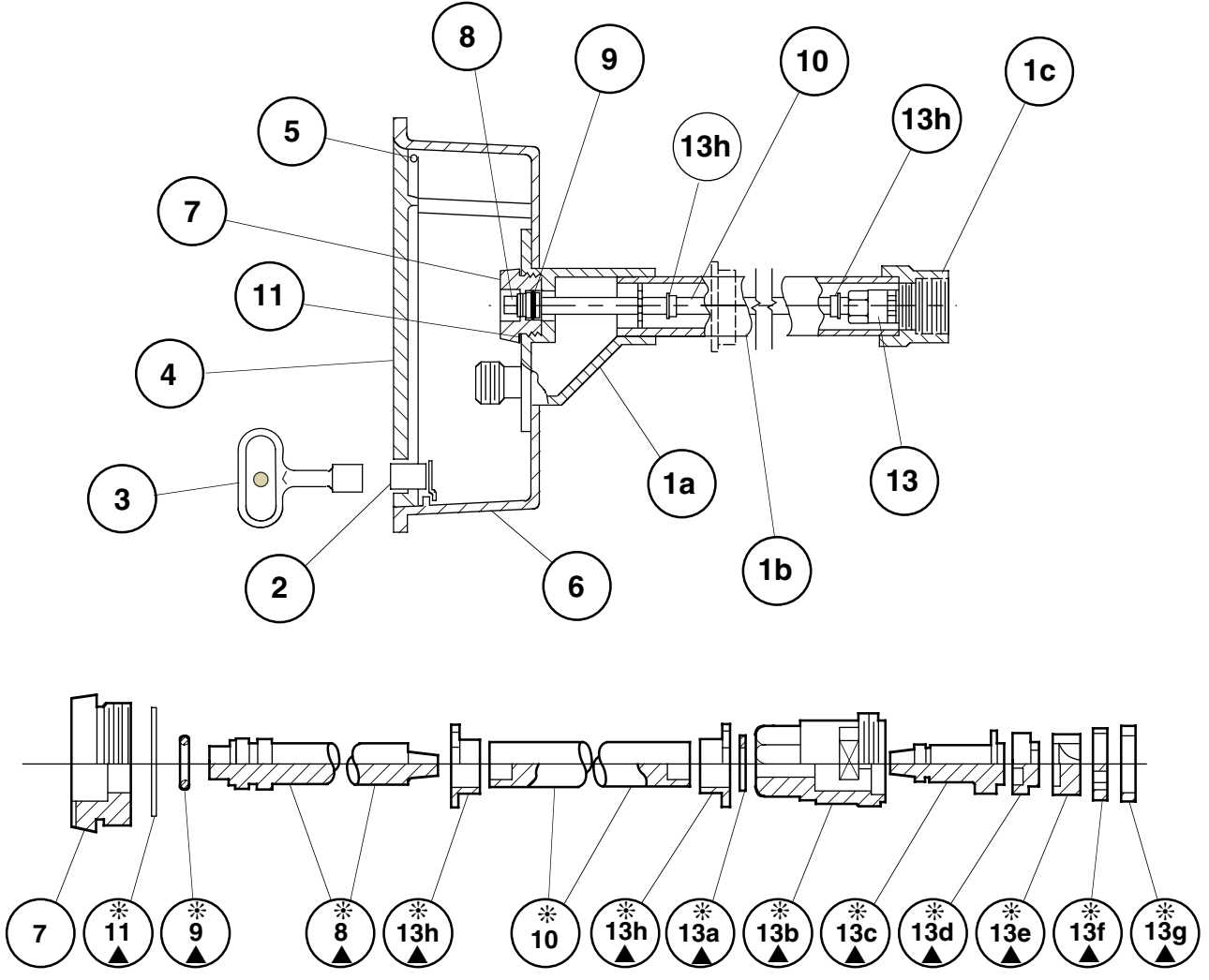
NOTE: Dimensions shown in parentheses are in millimeters.

FIGURE NUMBER	J H G F	7-6-95 8-3-94 9-21-93 10-22-92	Added Millimeters Revised Submittal Update Chg'd Dwg & Added note	EMB EMB EMB EMB	BS BS BS	WEIGHT POUNDS	VOLUME CUBIC FEET	FIGURE NUMBER 5560QT, 5561QT
	REV.	DATE	DESCRIPTION	BY	CKD. BY			

DRAWING NUMBER S5560QT
 SIZE A
 SCALE: NONE
 DATE: 12-8-86
 APPROVED BY: TD
 CHECKED BY: VGD
 DRAWN BY: WAS
 5560QT, 5561QT
 DIMENSIONS ARE SUBJECT TO MANUFACTURERS TOLERANCE AND CHANGE WITHOUT NOTICE
 WE CAN ASSUME NO RESPONSIBILITY FOR USE OF SUPERSEDED OR VOID DATA

PARTS LIST WITH MAINTENANCE INSTRUCTIONS

WE CAN ASSUME NO RESPONSIBILITY FOR USE OF SUPERSEDED OR VOID DATA



▲ These Replacement Parts Available in HPRK-7 (2) Repair Kits

* These Parts Accessible from Face of Hydrant by Removing Face Nut.

HYDRANT PARTS LIST					
NO.	DESCRIPTION	NO.	DESCRIPTION	NO.	DESCRIPTION
1	Head/Casing Assembly	6	Box	13b	Valve Body
1a	Head	7	Face Nut	13c	Valve Actuator
1b	Casing	8	Actuator Shaft	13d	Nylon Thrust Washer
1c	Valve Housing	9	Actuator "O" Ring	13e	Rotating Ceramic Disc
2	Locking Device	10	Operator Rod	13f	Fixed Ceramic Disc
3	Key	11	Face Nut Washer	13g	Silicon Rubber Seal
4	Cover	13	Valve Body Assembly	13h	Retainer Guide (2)
5	Hinge Pins (2)	13a	Retaining Ring		

 DRAWING NUMBER: 5560QTBS
 SIZE: A
 SCALE: NONE
 DATE: 12-8-86
 APPROVED BY: TD
 CHECKED BY: VGD
 DRAWN BY: WAS

FIGURE NUMBER 5560QT, 5561QTBS	REV. E D C	DATE 9-22-93 9-17-92 12-8-86	DESCRIPTION Chg'd Note Chg'd to QT Style Revised	BY EMB EMB WAS	CKD. BY BS TD	WEIGHT POUNDS	VOLUME CUBIC FEET	FIGURE NUMBER 5560QT, 5561QTBS
--	----------------------------	--	--	--------------------------------	----------------------------	-------------------------	-----------------------------	--