

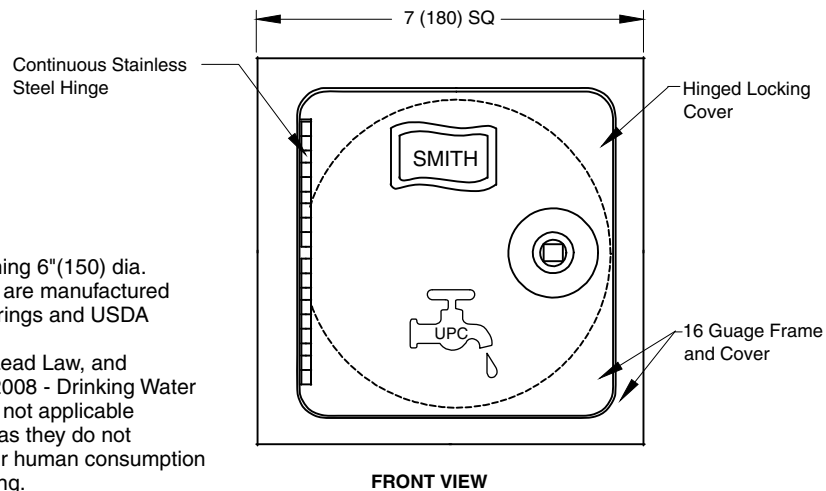
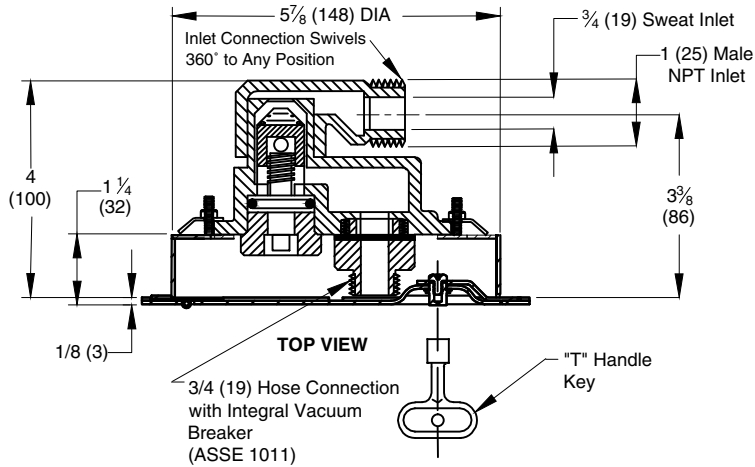


LOCATION

NARROW WALL WARM CLIMATE HYDRANT

HYDRANT BOX FOR 6"(150) DIAMETER CORED HOLE IN CONCRETE WALL

FUNCTION: For installation in interior or exterior wall of building where a concealed hose connection is desired and there is no danger of freezing. Hydrant features an integral type vacuum breaker. The stainless steel recessed box conceals the nozzle and operating mechanism. The locking cover prevents unauthorized use.



NOTES:

1. Recommended wall opening 6"(150) dia.
2. All Jay R. Smith hydrants are manufactured with "NO LEAD" brazing rings and USDA approved lubricants.
3. The AB1953, California Lead Law, and NSF/ANSI Standard 61-2008 - Drinking Water System Components are not applicable to Jay R. Smith hydrants as they do not convey/dispense water for human consumption through drinking or cooking.
4. Dimensions shown in parentheses are in millimeters.

REGULARLY FURNISHED:

All Bronze Warm Climate Hydrant with Chrome Plated Face, Hose Connection having an Integral ASSE 1011 Vacuum Breaker, 360° Swivel Inlet Connection. Stainless Steel Box for 6"(150) Cored Hole and "T" Handle Key.

VARIATIONS:

- Cylinder Lock -CL
- "Water" on Cover -W

A small amount of water seepage may occur from the vacuum breaker and operating screw upon initial opening and closing of the hydrant. This is normal operation.

DRAWING NUMBER
5518-R

SIZE
A

SCALE:
NONE

DATE:
6-21-11

APPROVED BY:
CL

CHECKED BY:
CL

DRAWN BY:
TBW

5518-R

WE CAN ASSUME NO RESPONSIBILITY FOR USE OF SUPERSIZED OR VOID DATA

DIMENSIONS ARE SUBJECT TO MANUFACTURERS TOLERANCE AND CHANGE WITHOUT NOTICE

FIGURE NUMBER

REV.	DATE	DESCRIPTION	BY	CKD. BY

WEIGHT POUNDS

VOLUME CUBIC FEET

FIGURE NUMBER
5518-R