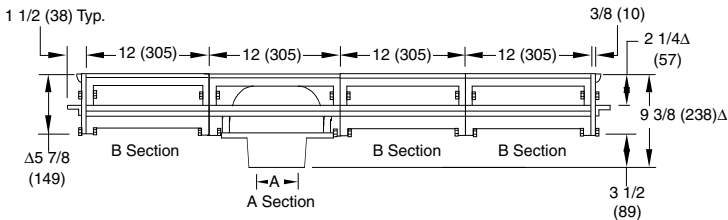


WIDE HEAVY DUTY TRENCH DRAINS

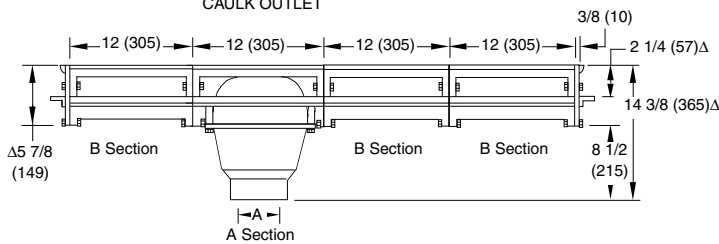
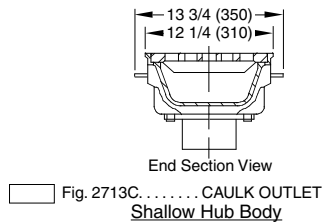
HEAVY DUTY MODULAR TRENCH DRAINS

FUNCTION: Used as a ramp drain in loading or parking areas where a wide continuous trench drain is required to handle moderate traffic loads and serve as a reservoir for large water runoff. Can also be used individually as an area drain (A Section Only).

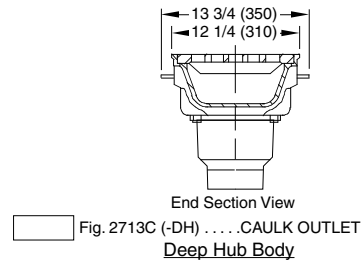
Free Area
 39.3 SQ IN
 (254) SQ CM
 (Each Section)



A (Pipe Size) = 03(80), 04(100), 05(125), 06(150) or 08(200)
 CAULK OUTLET



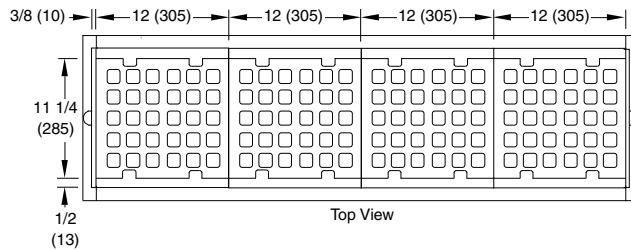
A (Pipe Size) = 03(80), 04(100),
 05(125), 06(150) or 08(200)
 CAULK OUTLET



Note: Apply sealant provided between each section and end plate prior to assembling.

Assembly ordering Information:

A and B sections are both 12" (305) long. A section is the outlet section and available in the standard hub or deep outlet hub (-DH). B section is the extension section. It is recommended that no more than 5, 12" (305) extension sections on each side of the A outlet section be used. Each section is 12" (305) long and end plates are 1 1/2" (38) thick including flange. In determining overall length, multiply 12" (305) x no. of sections and add 3" (76) (thickness of the two end plates).



NOTE: Last digit of figure number designates number of "B" sections.

NOTE: Any figure number other than the 2710 and 2711 must be furnished with sectional layout when placing order, to insure proper assembly at jobsite.

REGULARLY FURNISHED:

Duco Cast Iron Flanged Body Outlet Section A and Flanged End Plate with Cast Iron Anti-Shift Loose Set Square Hole Grate.

Δ Add 1 1/4" (32) when Bronze Top is specified.

Note: B sections are shown above with the A section for illustrative purposes only. Only the A section is regularly furnished and additional B sections must be specified as determined by figure number.

VARIATIONS:

- Backwater Valve -V 02(50)
- 04"(100) (Deep Hub Body Only)
- Deep Hub -DH, Not Available in 08" (200)
- Dome Bottom Strainer -DBS
- Flashing Clamp -C
- Sediment Bucket -B (Deep Hub Body only)
- Vandal Proof Grate -U

OPTIONAL MATERIALS:

- Ductile Iron Grate -M
- Galvanized Cast Iron -G
- Nickel Bronze Top -NB
- Polished Bronze Top -PB

NOTE: Dimensions shown in parentheses are in millimeters.

DRAWING NUMBER
S2713

SIZE
A

SCALE:
NONE

DATE:
12-29-06

APPROVED BY:
ECW

CHECKED BY:
BW

DRAWN BY:
RN

2713

WE CAN ASSUME NO RESPONSIBILITY FOR USE OF SUPERSEDED OR VOID DATA

REV.	DATE	DESCRIPTION	BY	CKD. BY

WEIGHT POUNDS	VOLUME CUBIC FEET	FIGURE NUMBER 2713
------------------	----------------------	------------------------------