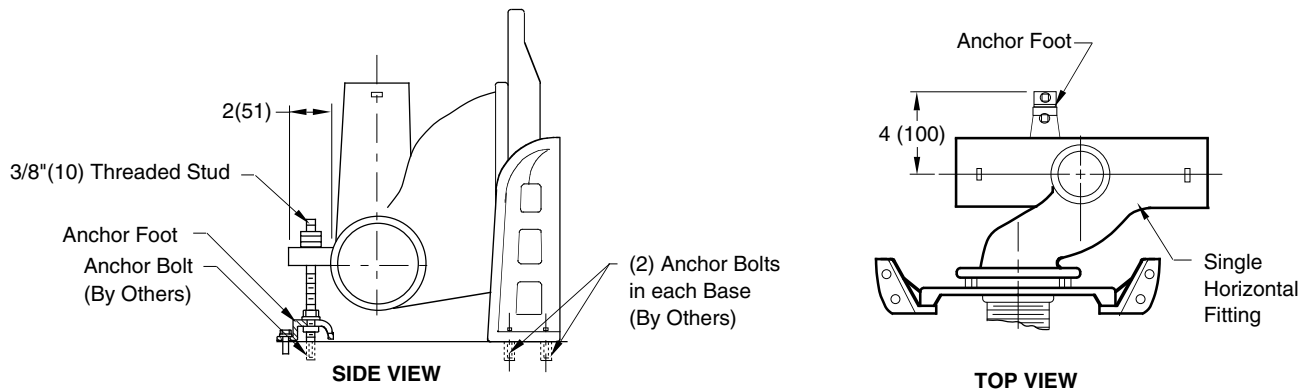


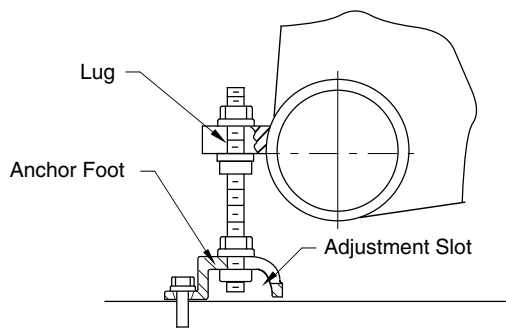
-M51 ANCHOR FOOT ASSEMBLY FOR USE WITH SINGLE HORIZONTAL FITTINGS

RECOMMENDED INSTALLATION

- (1) Set up fitting, faceplate and base support legs as shown in regular instruction (from trim box). Base supports must be anchored to floor with two (2) bolts in each base.
- (2) Install -M51 anchor assembly using integral lug on rear of fitting.
- (3) Anchor foot and hardware are supplied in separate trim bag. Foot is anchored to floor with one (1) bolt (as shown below). Rear lug on fitting is connected to foot using 3/8"(10) stud, nuts and washers from -M51 trim bag.



ENLARGED VIEW OF LUG AND ANCHOR FOOT



NOTE: Dimensions shown in parenthesis are in millimeters.

ORDERING NOTE

The -M51 anchor foot is regularly furnished with single horizontal and vertical fittings.

NOTE: The -M51 anchor foot assembly is furnished as follows:

QTY.	DESCRIPTION	PART NO.
(1)	C.I. Anchor Foot	07805-10-0
(1)	3/8"(10) - 16 x 12(305) Z.P. Steel Stud	76501-86-60-120
(4)	3/8"(10) - 16 Z.P. Steel Sq. Nuts	76452-86-6
(3)	5/16"(8) Z.P. Steel Washers	76281-86-6

DRAWING NUMBER: S-M51
SIZE: A
SCALE: NONE
DATE: 2-27-76
APPROVED BY: R.P.
CHECKED BY: WZ
DRAWN BY: JMA
FIGURE NUMBER: -M51

WE CAN ASSUME NO RESPONSIBILITY FOR USE OF SUPERSEDED OR VOID DATA
DIMENSIONS ARE SUBJECT TO MANUFACTURERS TOLERANCE AND CHANGE WITHOUT NOTICE

REV.	DATE	DESCRIPTION	BY	CKD. BY	WEIGHT POUNDS	VOLUME CUBIC FEET	FIGURE NUMBER -M51
D	2-9-04	Revised Description Part No.	RN	CL			
C	12-10-03	Revised Dwg.	RN	CL			
B	9-29-98	Revised Dwg.	CMB				
A	4-12-95	Revised Dimensions	CMB				

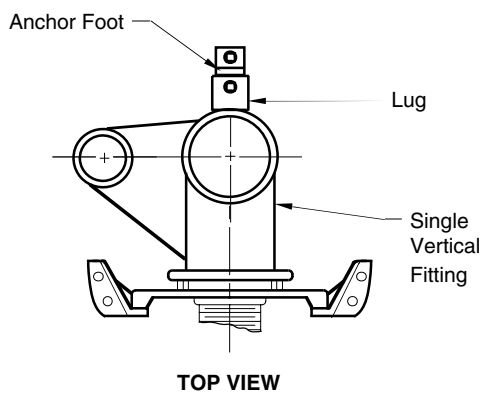
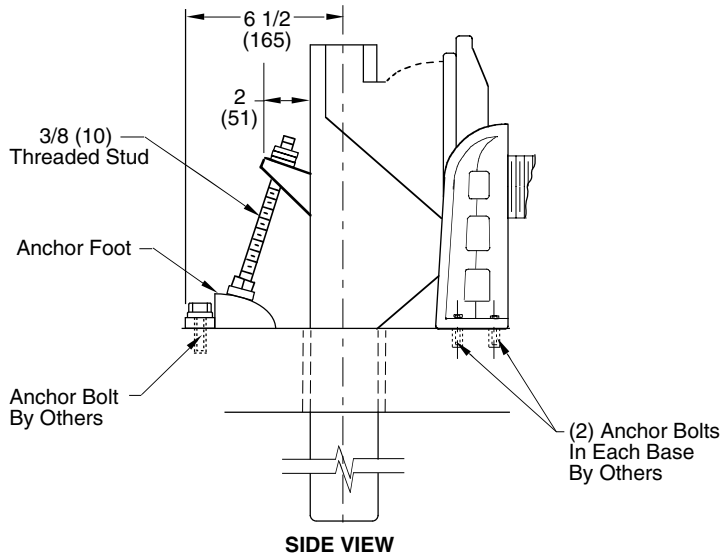
DRAWING NUMBER S-M51BS	SIZE A	SCALE: NONE	DATE: 3-2-78	APPROVED BY: R.P.	CHECKED BY: R.P.	DRAWN BY: W.H.	-M51BS	<h2 style="margin: 0;">M-51 ANCHOR FOOT ASSEMBLY</h2> <h3 style="margin: 0;">FOR USE WITH SINGLE VERTICAL ADJUSTABLE FITTINGS</h3>
----------------------------------	------------------	-----------------------	------------------------	-----------------------------	----------------------------	--------------------------	---------------	--

WE CAN ASSUME NO RESPONSIBILITY FOR USE OF SUPERSEDED OR VOID DATA

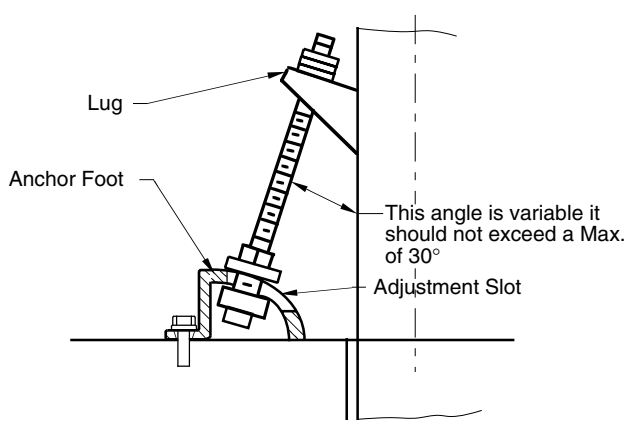
DIMENSIONS ARE SUBJECT TO MANUFACTURERS TOLERANCE AND CHANGE WITHOUT NOTICE

RECOMMENDED INSTALLATION

- (1) SET UP FITTING, FACEPLATE AND BASE SUPPORT LEGS AS SHOWN IN REGULAR INSTRUCTIONS (FROM TRIM BOX). BASE SUPPORTS MUST BE ANCHORED TO FLOOR WITH TWO (2) BOLTS IN EACH BASE.
- (2) INSTALL M-51 ANCHOR ASSEMBLY USING INTEGRAL LUG ON REAR OF FITTING.
- (3) ANCHOR FOOT AND HARDWARE ARE SUPPLIED IN SEPARATE TRIM BAG. FOOT IS ANCHORED TO FLOOR WITH ONE (1) BOLT (AS SHOWN BELOW). REAR LUG ON FITTING IS CONNECTED TO FOOT USING 3/8" STUD, NUTS AND WASHERS FROM M-51 TRIM BAG.



ENLARGED VIEW OF LUG AND ANCHOR FOOT



NOTE: Dimensions shown in parenthesis are in millimeters.

NOTE: The -M51 anchor foot assembly is furnished as follows:

QTY.	DESCRIPTION	PART NO.
(1)	C.I. Anchor Foot	07809-10-0
(1)	3/8"(10) - 16 x 12(305) Z.P. Steel Stud	76501-86-60-120
(4)	3/8"(10) - 16 Z.P. Steel Sq. Nuts	76452-86-6
(3)	5/16"(8) Z.P. Steel Washers	76281-86-6

REV.	DATE	DESCRIPTION	BY	CKD. BY	WEIGHT POUNDS	VOLUME CUBIC FEET	FIGURE NUMBER -M51BS
C	2-9-04	Revised Description Part No.	RN	CL			
B	12-10-03	This Dwg. was -M51-V w/Rev.	RN	CL			
A	7-7-98	Submittal Update	ASL	BS			