

E



JAY R. SMITH MFG. CO.®
 DIVISION OF SMITH INDUSTRIES, INC.
 POST OFFICE BOX 3237
 MONTGOMERY, ALABAMA 36109-0237 (USA)
 TEL: 334-277-8520 FAX: 334-272-7396 www.jrsmith.com

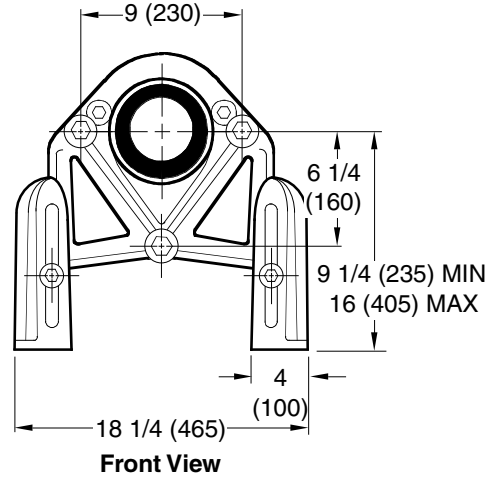
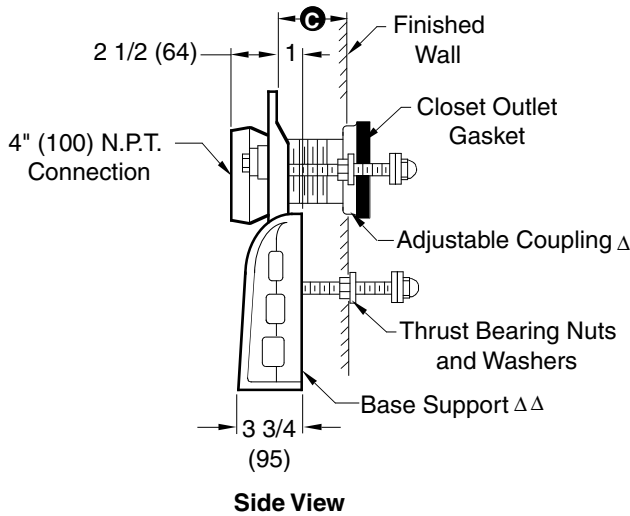


MEMBER OF:

LOCATION

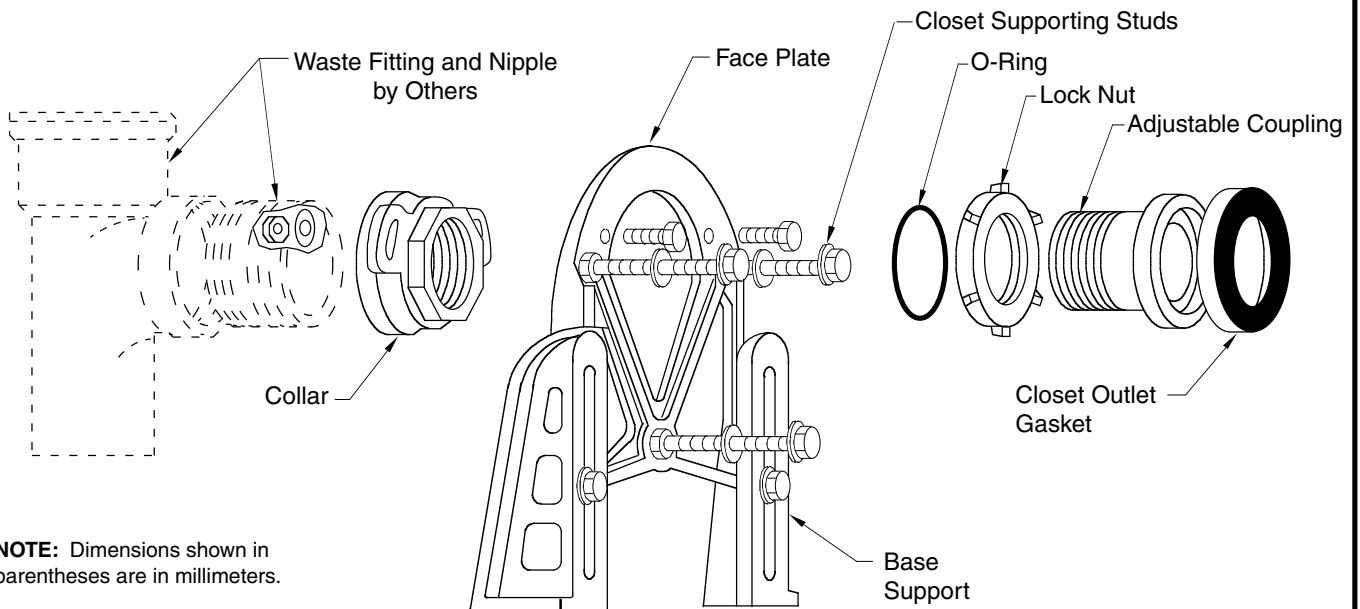
FACE PLATE FIXTURE SUPPORTS

WITHOUT FITTINGS FOR BLOWOUT WATER CLOSETS



⊙ = 1" (25) min to 3" (76) max as regularly furnished

TYPICAL EXPLODED VIEW OF 0600 SERIES



NOTE: Dimensions shown in parentheses are in millimeters.

NOTE:

Δ See reverse side for recommended setting of closet outlet connection and various modifications.

ΔΔ Base support must be securely anchored to floor (with four 1/2"(13) bolts furnished by others).

NOTE:

Longer couplings available when required up to 14"(355) long.

DRAWING NUMBER
S0620

SIZE
A

SCALE:
NONE

DATE:
10-27-89

APPROVED BY:
TD

CHECKED BY:
RP

DRAWN BY:
RVB

0620

FIGURE NUMBER

WE CAN ASSUME NO RESPONSIBILITY FOR USE OF SUPERSEDED OR VOID DATA

DIMENSIONS ARE SUBJECT TO MANUFACTURERS TOLERANCE AND CHANGE WITHOUT NOTICE

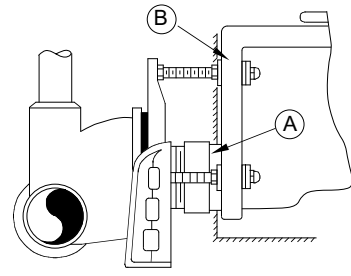
EDCB	5-1-96 7-26-93 1-16-92 9-89	Added Millimeters Submittal Update Redrawn and Added Locknut New Format and Change Callout	EMB EMB TWK EMB	BS BS BS	WEIGHT POUNDS	VOLUME CUBIC FEET	FIGURE NUMBER
REV.	DATE	DESCRIPTION	BY	CKD. BY			

0620

MODIFICATIONS AND VARIATIONS FOR BLOWOUT WATER CLOSETS

RECOMMENDED SETTING OF CLOSET OUTLET CONNECTION AND FIXTURE STUDS

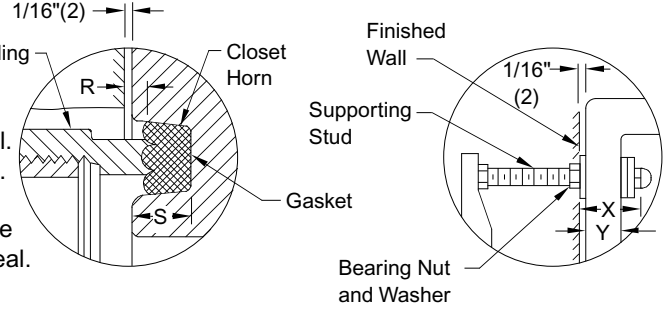
Manufacturers have slight differences in the depth of the closet horn and flange thickness of their closets. Usually the fixture support closet connection should extend 1/4"(6) beyond face of finished wall (Dimension "R") and the fixture studs 2 1/4"(57) (Dimension "X"). For exact dimensions please use the formulas below.



DETAIL A Formula for "R" is: $S + 1/16"(2) - 1/2"(13) = R$

- S = Depth of closet horn
- 1/16"(2) = Distance closet is to set away from finished wall.
- R = Distance coupling should extend beyond finished wall.

NOTE: When the fixture is installed, closet gasket must be compressed sufficiently to assure a gas and water-tight seal.



DETAIL B $FZ1/16"(2) + 9/16"(14) = X$

- Y = thickness of closet wall flange
- 1/16"(2) = distance closet is to set away from finished wall.
- X = distance supporting stud should extend beyond finished wall.

NOTE: Dimensions shown in parentheses are in millimeters.

DRAWING NUMBER: S0620BS
 SIZE: A
 SCALE: NONE
 DATE: 10-27-69
 APPROVED BY: TD
 CHECKED BY: RP
 DRAWN BY: RVB
 FIGURE NUMBER: 0620BS

WE CAN ASSUME NO RESPONSIBILITY FOR USE OF SUPERSEDED OR VOID DATA

D C B A	5-1-96 7-26-93 9-89 12-70	Added Millimeters Submittal Update New Format Updated Expl. View	EMB EMB EMB	BS BS TD	WEIGHT POUNDS	VOLUME CUBIC FEET	FIGURE NUMBER 0620BS
REV.	DATE	DESCRIPTION	BY	CKD. BY			