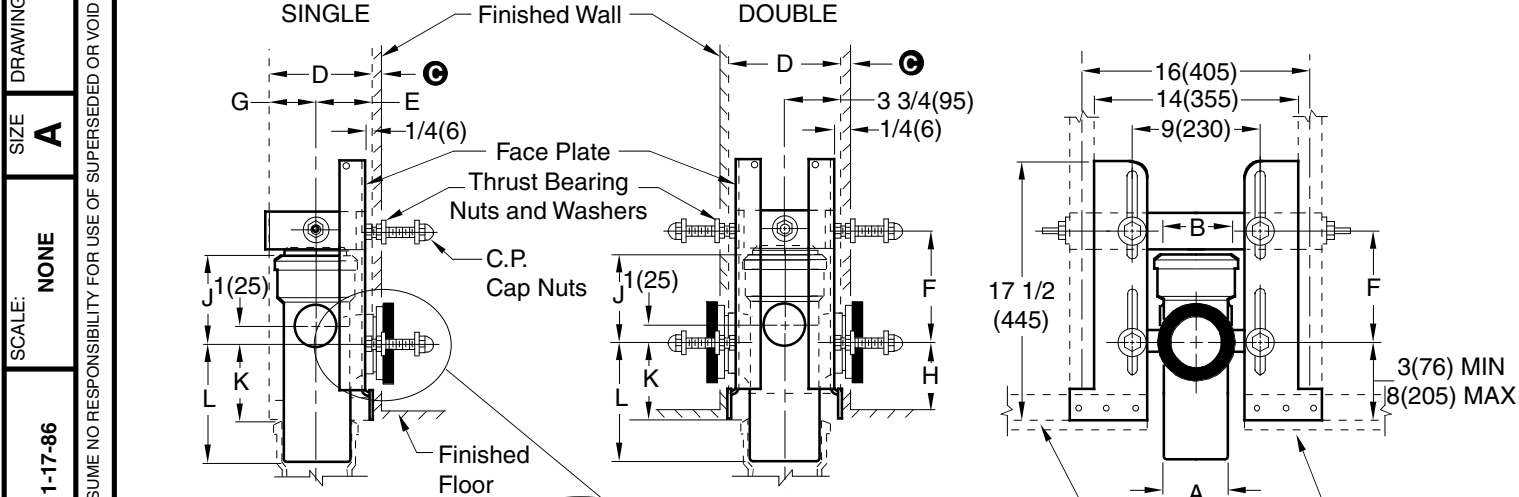


**COMPACT FIXTURE SUPPORTS**  
**FOR SIPHON JET WATER CLOSETS WITH VERTICAL CENTER LINE FITTINGS**

**STUD-MOUNT FRAME FOR HUB & SPIGOT SYSTEMS**



**Fig. 0544 Side View** **Fig. 0544D Side View** **Front View**

Fig. 0532 . . . . . 3"(80) CAULK w/2"(51) Vent
Fig. 0533 . . . . . 3"(80) CAULK w/3"(76) Vent
Fig. 0542 . . . . . 4"(100) CAULK w/2"(51) Vent
Fig. 0544 . . . . . 4"(100) CAULK w/4"(100) Vent
Fig. 0544D . . . . . 4"(100) CAULK Double w/4"(100) Vent

**NOTE:** Coupling should extend 5/16"(8) beyond finished wall.  
**NOTE:** When using closet with bar hanger, add suffix-H to figure numbers shown.  
**NOTE:** See roughing-in table on reverse side for "F" and "H" dimensions and list of compatible fixtures. Double support for use with gravity flush tank type water closets only.  
**NOTE:** Longer closet studs and couplings available when required.  
 Ⓞ 1"(25) MIN to 1 1/4"(32) MAX regularly furnished. Other dimensions available upon request. Service weight regularly furnished.

A	B	D	E	G	J	K	L
SIZE	SIZE	STUD					
3(80)	2(51)	2X6	3 1/2(89)	1 3/4(44)	5 1/4(135)	5 1/4(135)	8(205)
3(80)	3(76)	2X6	3 1/2(89)	1 3/4(44)	6(150)	5 1/4(135)	8(205)
4(100)	2(51)	2X8	3 1/2(89)	3 1/2(89)	5 1/4(135)	5(125)	8(205)
4(100)	4(100)	2X8	3 1/2(89)	3 1/2(89)	6(150)	5(125)	8(205)

**INSTALLATION INSTRUCTIONS**

- Center stack between two studs back "E" dimension (shown in table) from stud faces. 0544D must be centered in sole plate.
- Cut out hole in sole plate and floor for stack.
- To determine the height of the stack in relation to the finished floor, subtract the "H" dimension from the "K" dimension.
- The fitting should now be caulked into the stack.
- The face plates are assembled to the reinforcing strap and to the arms of the fitting by means of the fixture studs and then nailed to the sole plate. The two vertical studs are set into place, then drilled for permanently anchoring the reinforcing strap with the stud bolts, nuts and washers.
- Thread locknut on male thread of adjustable coupling approximately 1"(25) and push "O"-Ring against locknut.
- Apply No. 90 Smith Seal to male threads on coupling. Install coupling and adjust it to extend 5/16"(8) beyond finished wall. Thread locknut snugly.
- Assemble the bearing nuts and washers to the fixture supporting studs. The fixture studs should extend 2 1/4"(57) beyond finished wall.
- Adjust bearing nuts so that washers extend 1/16"(2) beyond finished wall.
- After wall is erected, remove any plaster grout touching the fixture studs, bearing nuts washers and coupling.
- Place gasket in closet recess and set closet on studs protruding from wall making sure that closet outlet is centered on coupling.
- Place fiber washers on studs. Apply the two bottom and top left cap nuts, tighten securely. Apply the top right cap nut hand tight and snug up 1/4 turn with wrench.

**NOTE:** When installing closet with bar hanger support follow the same instructions as above, except that the hanger plate should be mounted on the top fixture studs. Adjust the top bearing nuts so that the face of the hanger extends 1/16"(2) beyond the finished wall, then lock in place with hex nuts.

**NOTE:** SEE REVERSE SIDE FOR ROUGH-IN TABLE. **NOTE:** Dimensions shown in parentheses are in millimeters.

<b>G</b>	1-27-06	Revised Note & Remove Note	RN	CL	WEIGHT POUNDS	VOLUME CUBIC FEET	<b>FIGURE NUMBER</b> <b>0532, 0533,</b> <b>0542, 0544</b>
<b>F</b>	8-26-05	Revised Note	TBW	CL			
<b>E</b>	8-1-96	Added Millimeters	EMB	BS			
<b>D</b>	6-14-94	Revised	EMB	BS			
REV.	DATE	DESCRIPTION	BY	CKD. BY			

DRAWING NUMBER S0532  
 SCALE: NONE  
 DATE: 1-17-86  
 APPROVED BY: SB  
 CHECKED BY: JD  
 DRAWN BY: CM  
 FIGURE NUMBER 0532, 0533, 0542, 0544  
 DIMENSIONS ARE SUBJECT TO MANUFACTURERS TOLERANCE AND CHANGE WITHOUT NOTICE  
 WE CAN ASSUME NO RESPONSIBILITY FOR USE OF SUPERSEDED OR VOID DATA

D



**JAY R. SMITH MFG. CO.®**  
 DIVISION OF SMITH INDUSTRIES, INC.  
 POST OFFICE BOX 3237  
 MONTGOMERY, ALABAMA 36109-0237 (USA)  
 TEL: 334-277-8520 FAX: 334-272-7396 www.jrsmith.com



MEMBER OF:



LOCATION

# ROUGH-IN TABLE FOR RESIDENTIAL WATER CLOSETS

## DIMENSION "H" ROUGH-IN HEIGHTS

FIXTURE MFG.	NAME	NUMBER	F	H
AM. STD.	GLENWALL	2093.100	7 1/2 (190)	4 1/8 (105)
CRANE	REXMONT	3-217	7 1/2 (190)	4 (100)
ELJER	WALFORD	091-7925, 7926, 7928, 7933	7 1/2 (190)	6 3/4 (170)

**NOTE:** The rough-in dimensions listed on this drawing are based on current information available to Jay R. Smith by the fixture manufacturers. We recommend that you verify these dimensions with the fixture manufacturer. We will not accept responsibility for rough-in dimension changes by the fixture manufacturer.

**NOTE:** Dimensions shown in parentheses are in millimeters.

DRAWING NUMBER  
S0500BS

SIZE  
A

SCALE:  
NONE

DATE:  
1-24-86

APPROVED BY:  
SB

CHECKED BY:  
JD

DRAWN BY:  
CM

WE CAN ASSUME NO RESPONSIBILITY FOR USE OF SUPERSEDED OR VOID DATA  
DIMENSIONS ARE SUBJECT TO MANUFACTURERS TOLERANCE AND CHANGE WITHOUT NOTICE

0500 SERIES

FIGURE NUMBER

D	1-27-06	Added NOTE to BS	RN	CL
C	8-26-05	Revised Table	TBW	CL
B	8-1-96	Added Millimeters	EMB	BS
A	7-20-93	Submittal Update	EMB	BS
REV.	DATE	DESCRIPTION	BY	CKD. BY

WEIGHT POUNDS	VOLUME CUBIC FEET	FIGURE NUMBER <b>0500 SERIES</b>
------------------	----------------------	-------------------------------------