

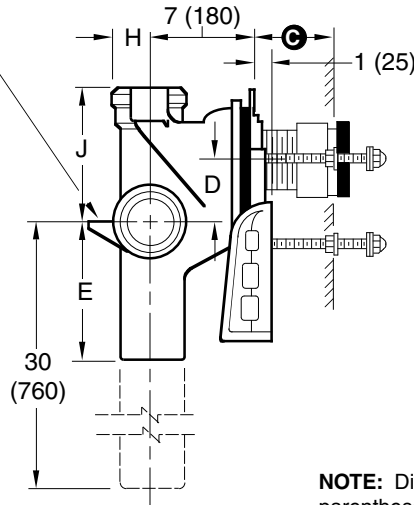
# ADJUSTABLE FIXTURE SUPPORTS

## SHALLOW ROUGH-IN TYPE FOR BLOWOUT WATER CLOSETS

### VERTICAL FITTINGS

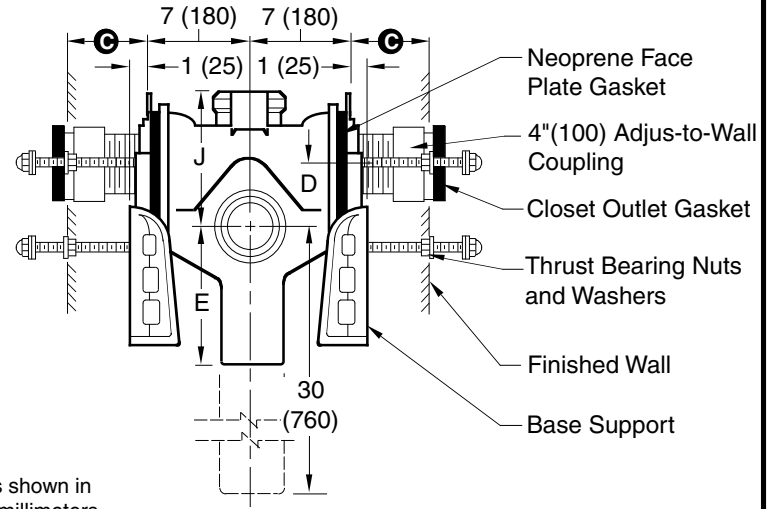
#### SINGLE

Rear Support Lug and -M51 Anchor Foot Assembly Regularly Furnished.



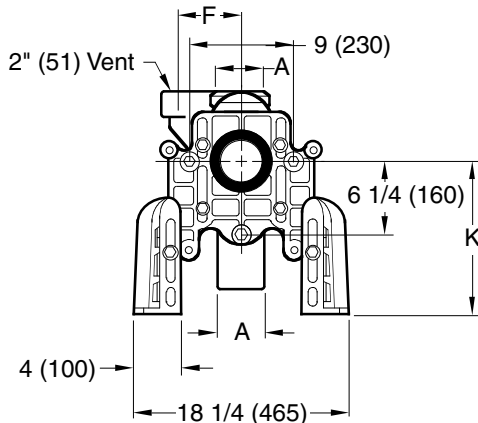
**Fig. 0330**  
Side View

#### DOUBLE



**Fig. 0330D**  
Side View

**NOTE:** Dimensions shown in parentheses are in millimeters.



**BLOWOUT**  
Front View

The water closet gasket regularly furnished is made of molded neoprene and designed to fit water closet outlet dimensions and configurations shown in ANSI Standard A112.19.2M-1982, Figure 13B. If gasket is not found to be compatible to fixture due to nonconformance of said fixture to ANSI A112.19.2M, then fixture manufacturer shall be consulted for a suitable gasket recommendation. Jay R. Smith assumes no liability for connections to fixtures which do not conform to these standards.

- Fig. 0330 . . . CAULK
- Fig. 0330D . . . CAULK DOUBLE
- Fig. 0360 . . . CAULK LONG BARREL
- Fig. 0360D . . . CAULK DOUBLE LONG BARREL

**NOTE:** Base support must be securely anchored to floor (with four 1/2" (13) bolts provided by contractor).

**NOTE:** 1 1/2" (38) or 2" (51) tapped inlet available. Add suffix -N.

**NOTE:** When used with concealed flush valve locate face plate behind supply pipe.

**NOTE:** See opposite side for **C** dimension and optional outlet connections.

A SIZE	D BLOWOUT		E	F	H	J	K BLOWOUT	
	MIN	MAX					MIN	MAX
4 (100)	2 3/4 (70)	5 1/2 (140)	10 (255)	5 1/4 (135)	3 (76)	9 (230)	10 3/4 (275)	15 3/4 (400)
5 (125)	2 7/8 (73)	5 3/4 (145)	11 1/2 (290)	6 1/4 (160)	3 1/2 (89)	11 1/2 (290)	10 3/4 (275)	15 3/4 (400)
6 (150)	2 3/4 (70)	5 1/2 (145)	11 1/2 (290)	6 1/4 (160)	4 (100)	11 1/2 (290)	10 3/4 (275)	15 3/4 (400)

B  
DRAWING NUMBER  
S0330

SIZE  
A

SCALE:  
NONE

DATE:  
12-19-89

APPROVED BY:  
TD

CHECKED BY:  
CR

DRAWN BY:  
EMB

0330, 0360

WE CAN ASSUME NO RESPONSIBILITY FOR USE OF SUPERSEDED OR VOID DATA

DIMENSIONS ARE SUBJECT TO MANUFACTURERS TOLERANCE AND CHANGE WITHOUT NOTICE

B A	1-30-98 4-22-94	Added Millimeters Submittal Update	EMB EMB	BS BS
REV.	DATE	DESCRIPTION	BY	CKD. BY

WEIGHT POUNDS	VOLUME CUBIC FEET
------------------	----------------------

**FIGURE NUMBER**  
**0330, 0360**

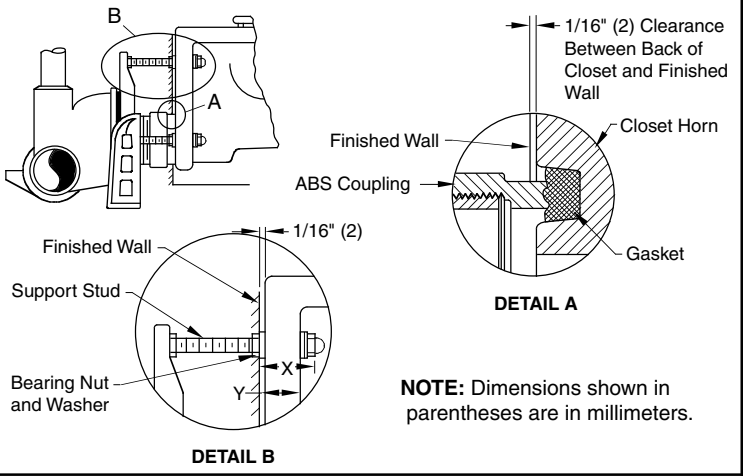
# MODIFICATIONS & VARIATIONS FOR SIPHON JET WATER CLOSETS

## RECOMMENDED SETTING OF CLOSET OUTLET CONNECTION AND FIXTURE STUDS

Manufacturers have slight differences in the depth of the closet horn and flange thickness of their closets. Usually the fixture support closet connection should extend 5/16" (8) beyond face of finished wall (Dimension "R") and the fixture studs 2 1/4" (57) (Dimension "X"). For exact dimensions please use the formulas below.

**DETAIL A** Formula for "R" is:  $S + 1/16" (2) - D = R$ .  
 S = Depth of closet horn  
 1/16" (2) = Distance closet is to set away from finished wall.  
 D = 1/2" (13) for felt gasket and 3/8" (10) for neoprene gasket.  
 R = Distance coupling should extend beyond finished wall.  
**NOTE:** When the fixture is installed, closet gasket must be compressed sufficiently to assure a gas and water-tight seal.

**DETAIL B** Formula for "X" is:  $Y + 1/16" (2) + 9/16" (14) = X$ .  
 Y = Thickness of closet wall flange.  
 1/16" (2) = Distance closet is to set away from finished wall.  
 X = Distance supporting stud should extend beyond finished wall.  
**NOTE:** Bearing nuts and washers must be set to take full loading from the fixture allowing 1/16" (2) clearance between fixture and wall.



DRAWING NUMBER: S0100BS  
 SIZE: A  
 SCALE: NONE  
 DATE: 1-16-85  
 APPROVED BY: JD  
 CHECKED BY: CR  
 DRAWN BY: VGD  
 100/400 Series Back Sheet

WE CAN ASSUME NO RESPONSIBILITY FOR USE OF SUPERSEDED OR VOID DATA  
 DIMENSIONS ARE SUBJECT TO MANUFACTURERS TOLERANCE AND CHANGE WITHOUT NOTICE

## OPTIONAL CLOSET OUTLET CONNECTIONS

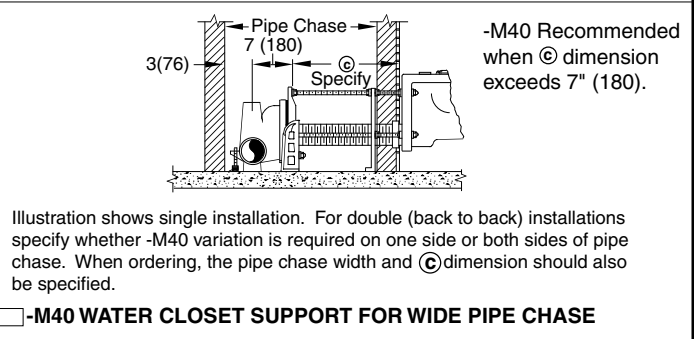
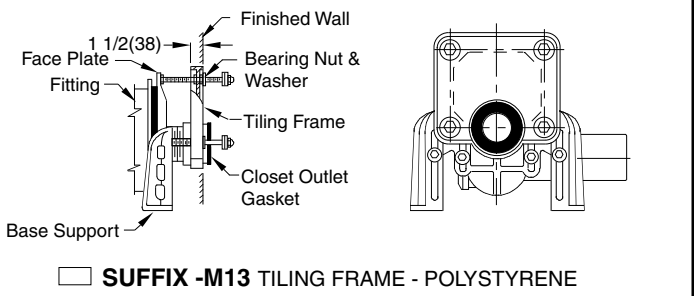
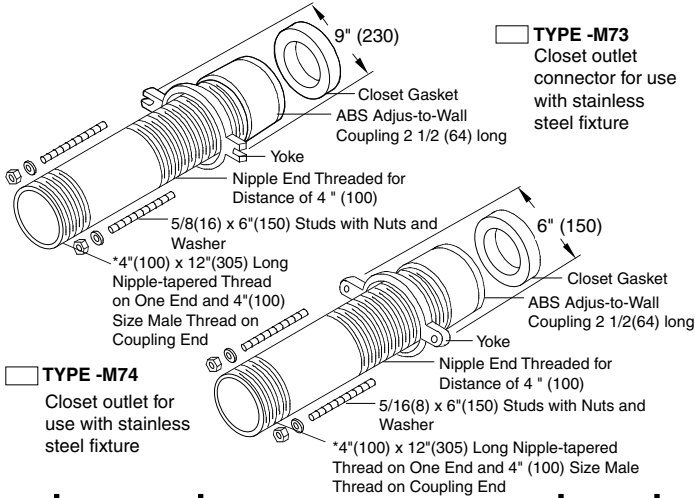
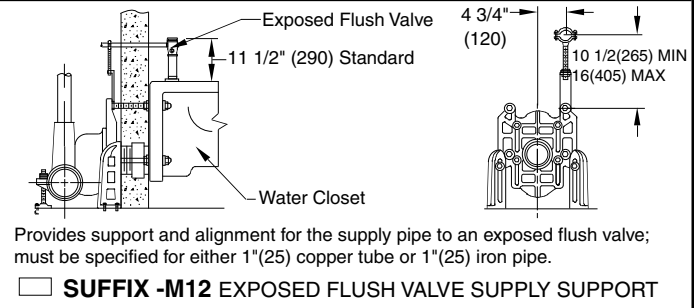
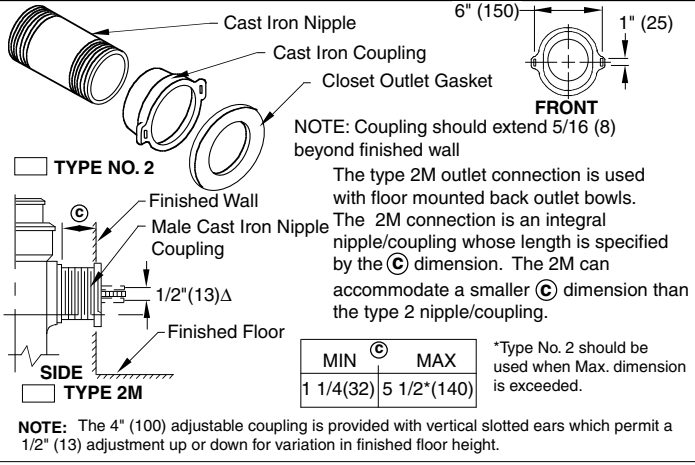


FIGURE NUMBER	REV.	DATE	DESCRIPTION	BY	CKD. BY	WEIGHT POUNDS	VOLUME CUBIC FEET	FIGURE NUMBER
100/400 Series Back Sheet	C	12-10-03	Added Note	RN	CL			100/400 Series Back Sheet
	B	2-26-96	Added Millimeters	EMB	BS			
	A	7-1-93	Submittal Update	EMB	BS			