



JAY R. SMITH MFG. CO.
 DIVISION OF SMITH INDUSTRIES, INC.
 POST OFFICE BOX 3237
 MONTGOMERY, ALABAMA 36109-0237 (USA)
 TEL: 334-277-8520 FAX: 334-272-7396 www.jrsmith.com

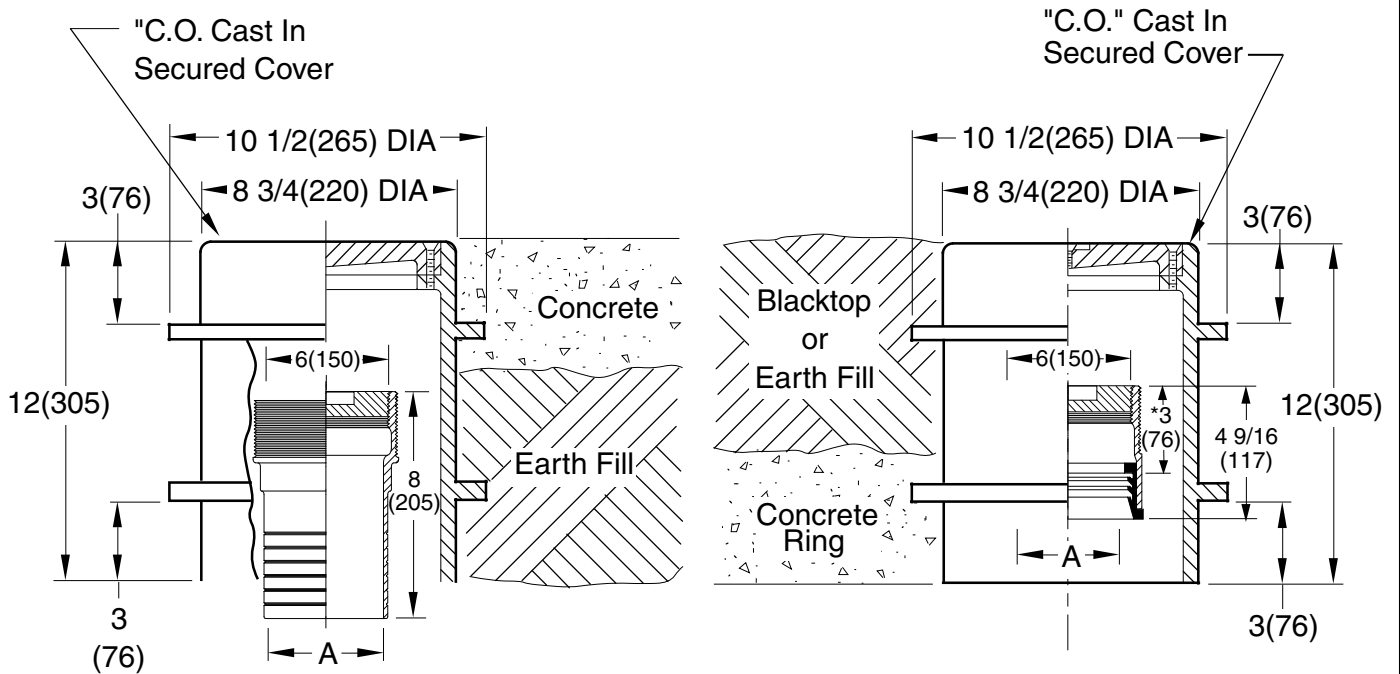


LOCATION

FLOOR CLEANOUTS FOR UNFINISHED AREAS

ROUND FLANGED HOUSING WITH HEAVY DUTY CAST IRON COVER

FUNCTION: Used in outside and inside areas. High flange permits use in areas surfaced with concrete or other poured materials. Low flange is used with a ring of concrete poured below the surface for non-surfaced areas and areas surfaced with asphalt paving. Housing is completely free of piping so that no loading is transmitted to the pipe.



"A" (Pipe Size) = 06(150) or 08(200)

"A" (Pipe Size) = 06(150)

SPIGOT OUTLET**

Fig. 4253STaper Thread - Bronze Plug..... Fig. 4263L

SPEEDI-SET ▲

**Sized for Service Weight and/or NO-HUB.

*This Dimension to Internal Stop of Speedi-Seal Gasket
 ▲ Available in "L" Service Weight, "LXH" Extra Heavy or "LPVC" PVC OR ABS. "LPVC" applicable to 06(150) pipe size only.

REGULARLY FURNISHED:
 Duco Cast Iron Cleanout with Taper Thread Bronze Plug and Double Flanged Housing with Heavy Duty Secured Scoriated Cast Iron Cover with Lifting Device.

VARIATIONS:
 Cover Cast with Words "Gas Shut-Off" -GSO or "Water Shut-Off" -WSO
 Less Ferrule and Plug (See Fig. 4880)
 Vandal Proof Top -U

OPTIONAL MATERIALS:
 Galvanized Cast Iron -G

NOTE: Dimensions shown in parentheses are in millimeters.

DRAWING NUMBER
S4250, 4261BS

SIZE
A

SCALE:
NONE

DATE:
5-5-06

APPROVED BY:
CEL

CHECKED BY:
CL

DRAWN BY:
RN

FIGURE NUMBER
4253, 4263

DIMENSIONS ARE SUBJECT TO MANUFACTURERS TOLERANCE AND CHANGE WITHOUT NOTICE

REV.	DATE	DESCRIPTION	BY	CKD. BY

WEIGHT POUNDS	VOLUME CUBIC FEET

FIGURE NUMBER
4253, 4263